

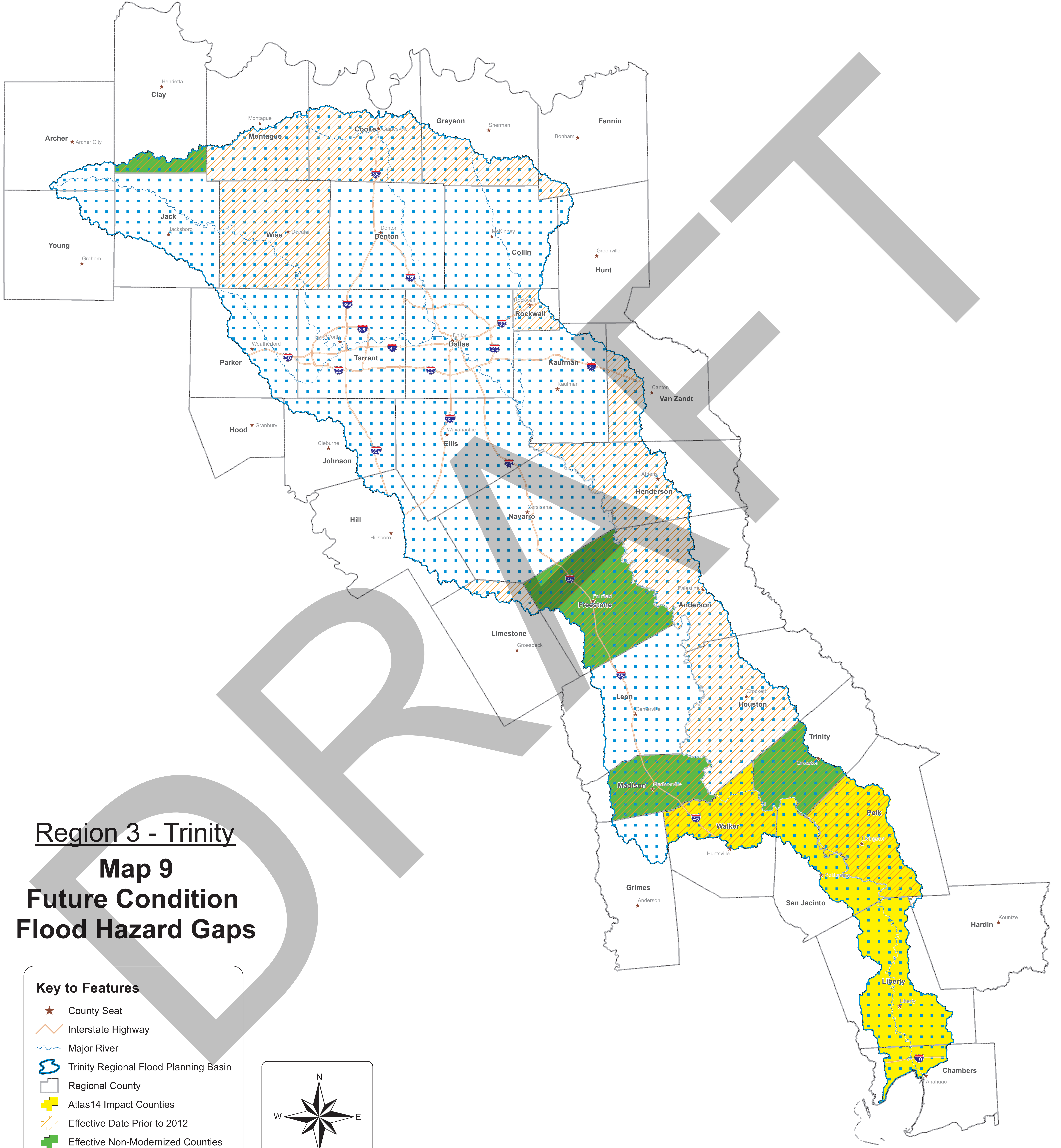
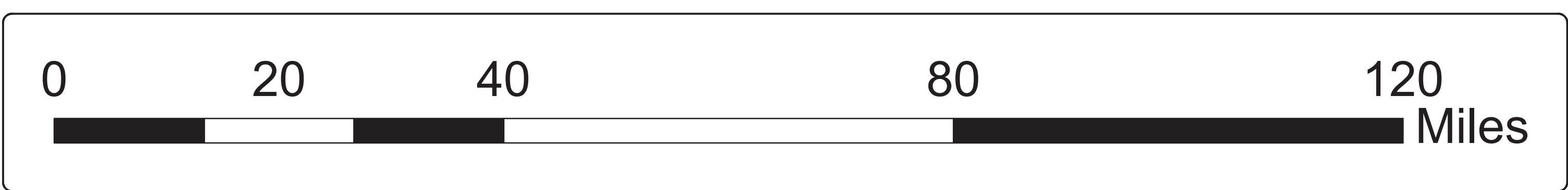
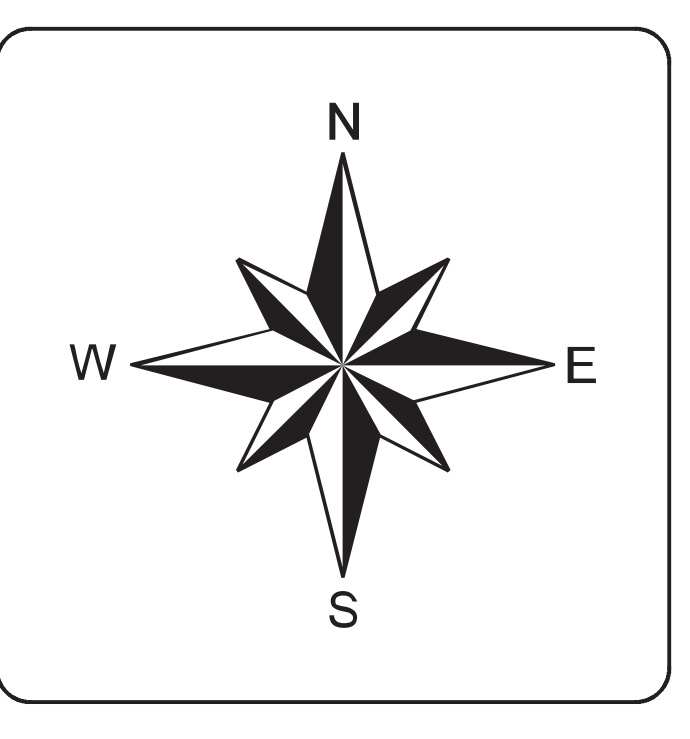
Region 3 - Trinity

Map 9

Future Condition Flood Hazard Gaps

Key to Features

- ★ County Seat
- Interstate Highway
- Major River
- Trinity Regional Flood Planning Basin
- Regional County
- Atlas14 Impact Counties
- Effective Date Prior to 2012
- Effective Non-Modernized Counties
- No Detailed Future Modeling Study and/or Mapping

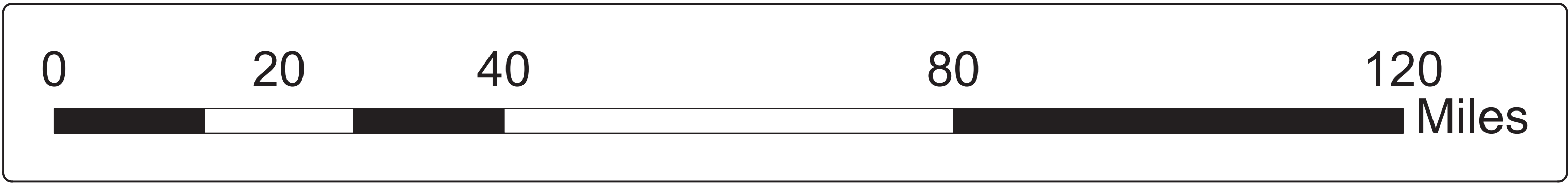
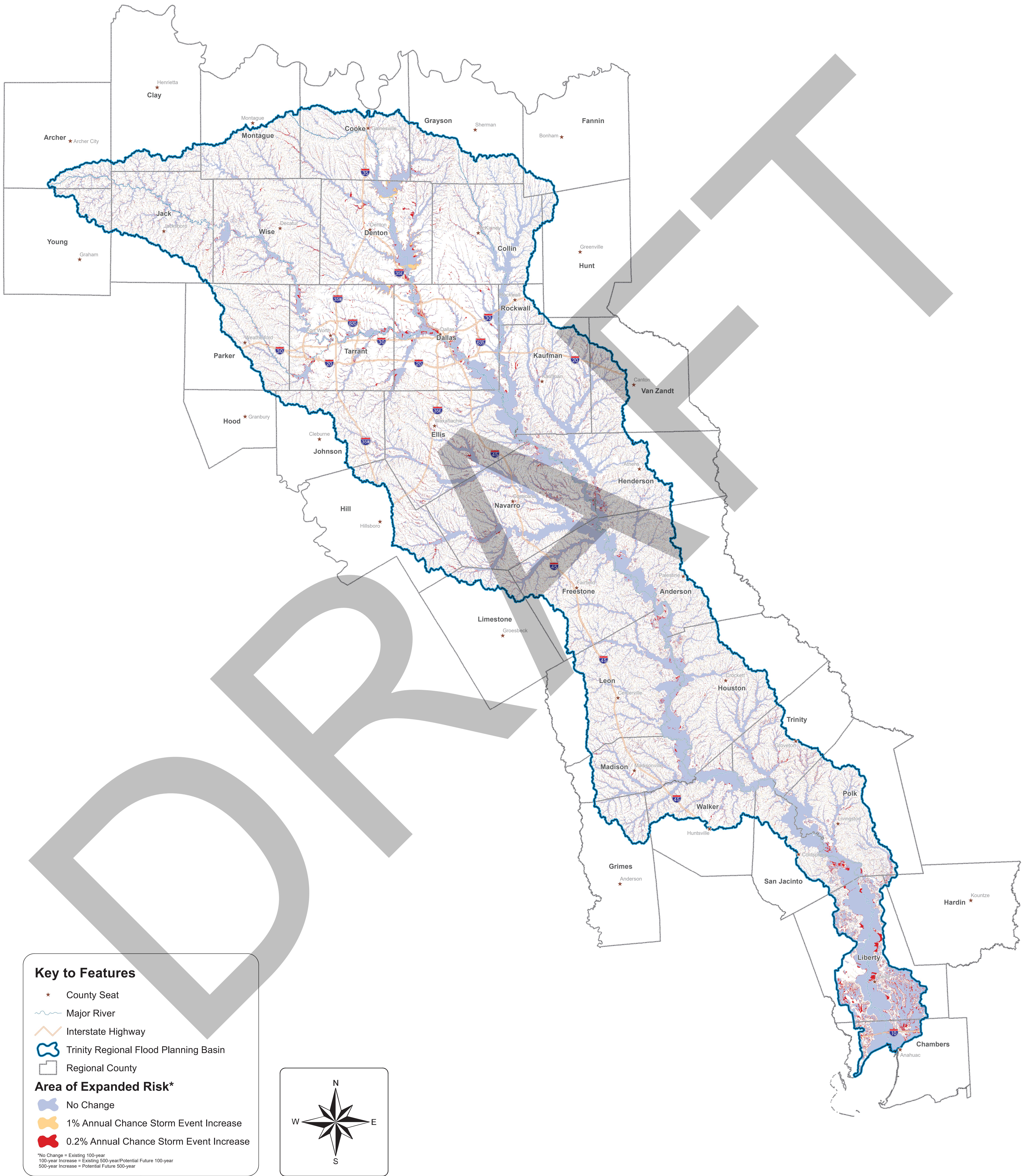


Region 3 - Trinity

Map 10

Extent of Increase of Flood Hazard

Comparison of Future Condition to Existing Condition Flood Hazard

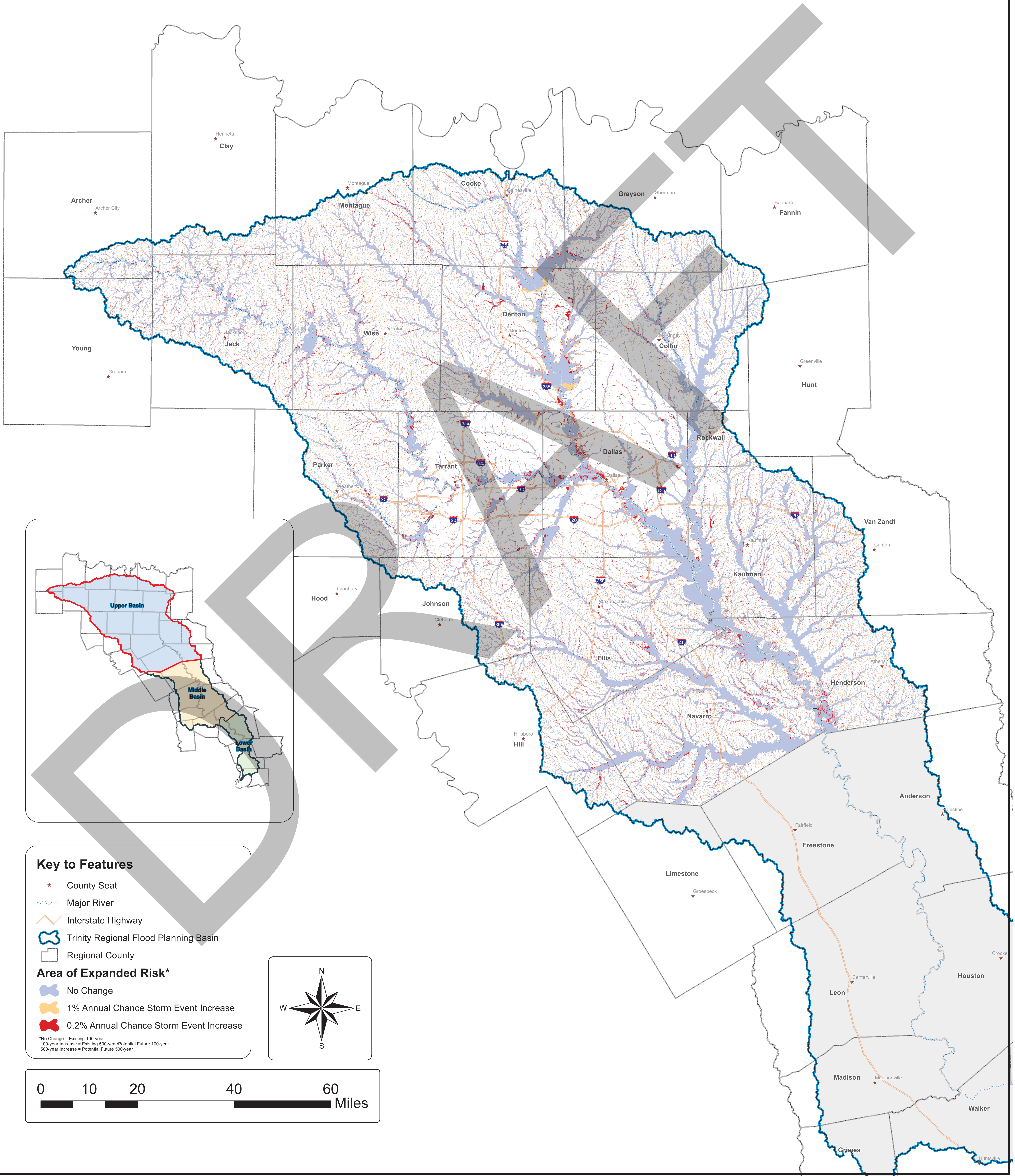


Region 3 - Trinity

Map 10.1

Extent of Increase of Flood Hazard (Upper Basin)

Comparison of Future Condition to Existing Condition Flood Hazard

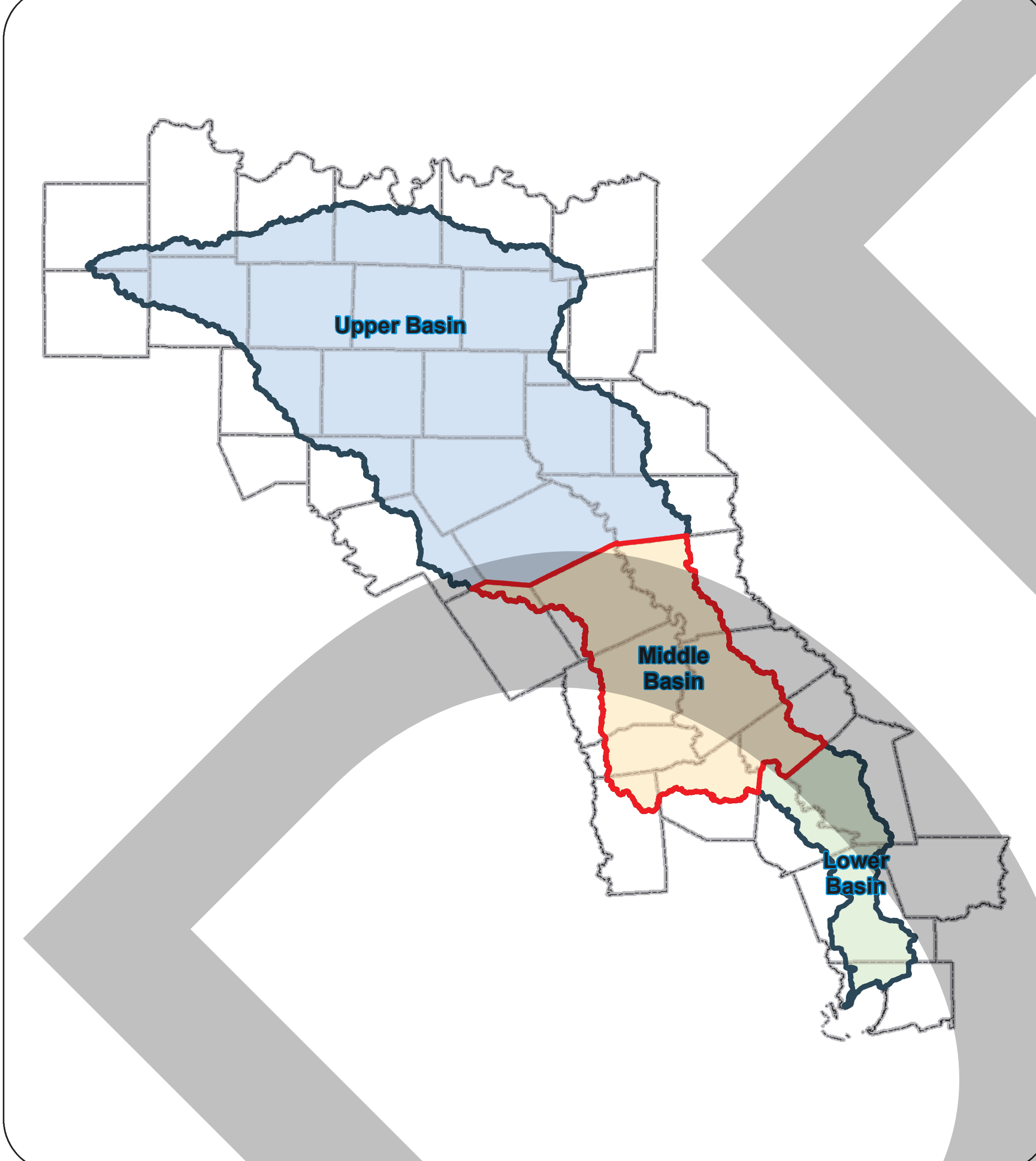
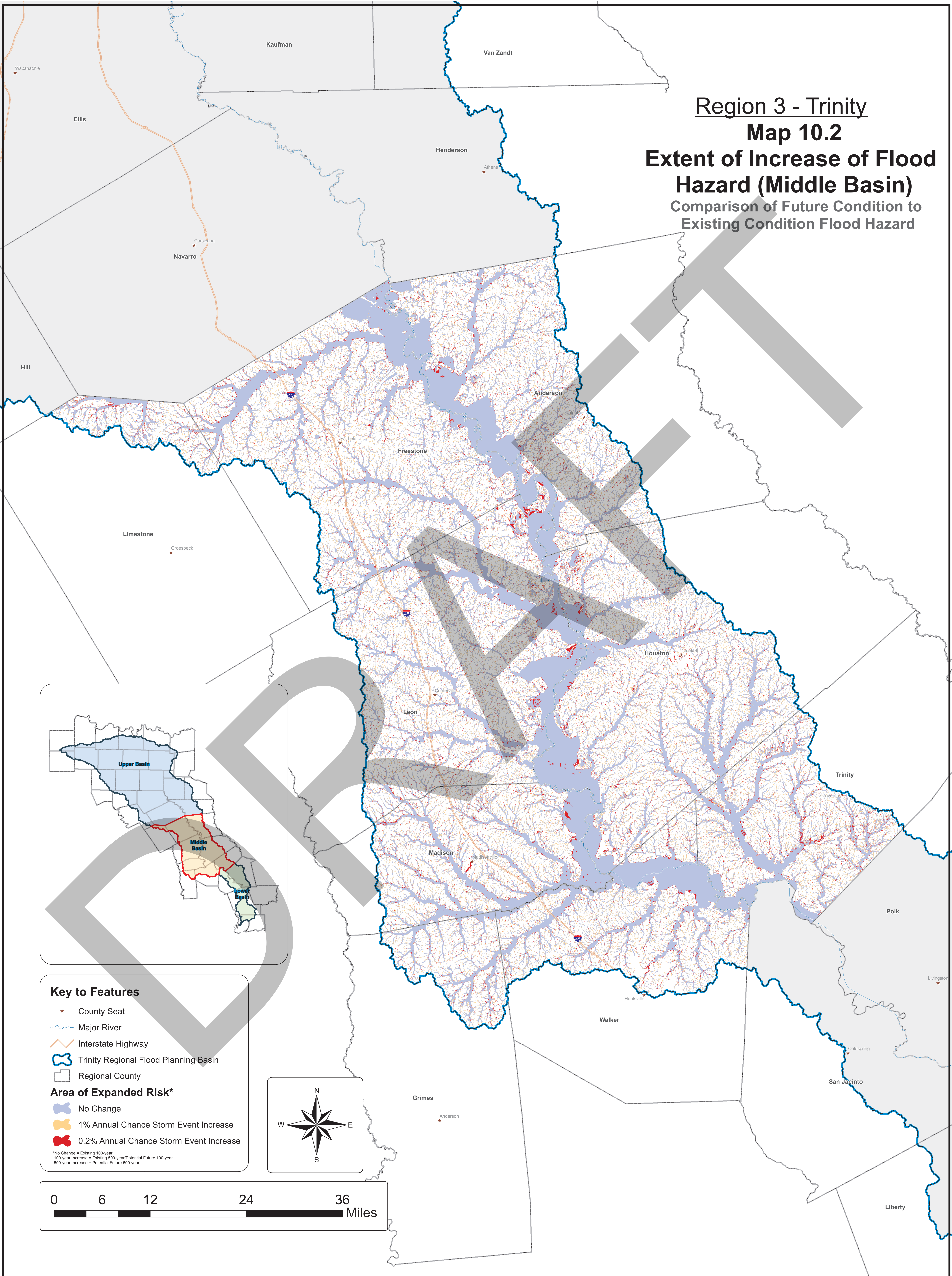


Region 3 - Trinity

Map 10.2

Extent of Increase of Flood Hazard (Middle Basin)

Comparison of Future Condition to Existing Condition Flood Hazard



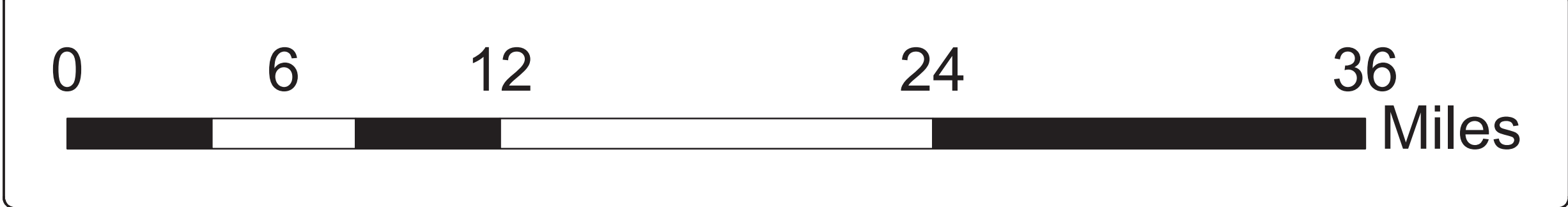
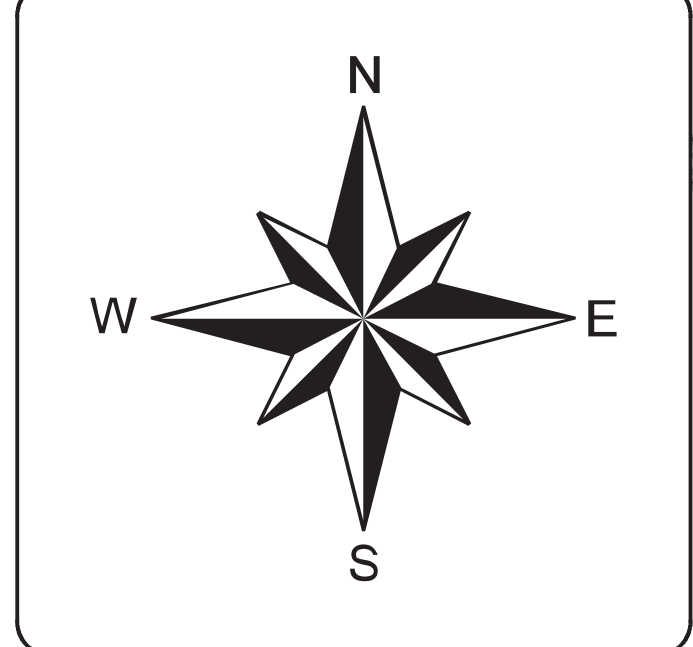
Key to Features

- ★ County Seat
- Major River
- Interstate Highway
- Trinity Regional Flood Planning Basin
- Regional County

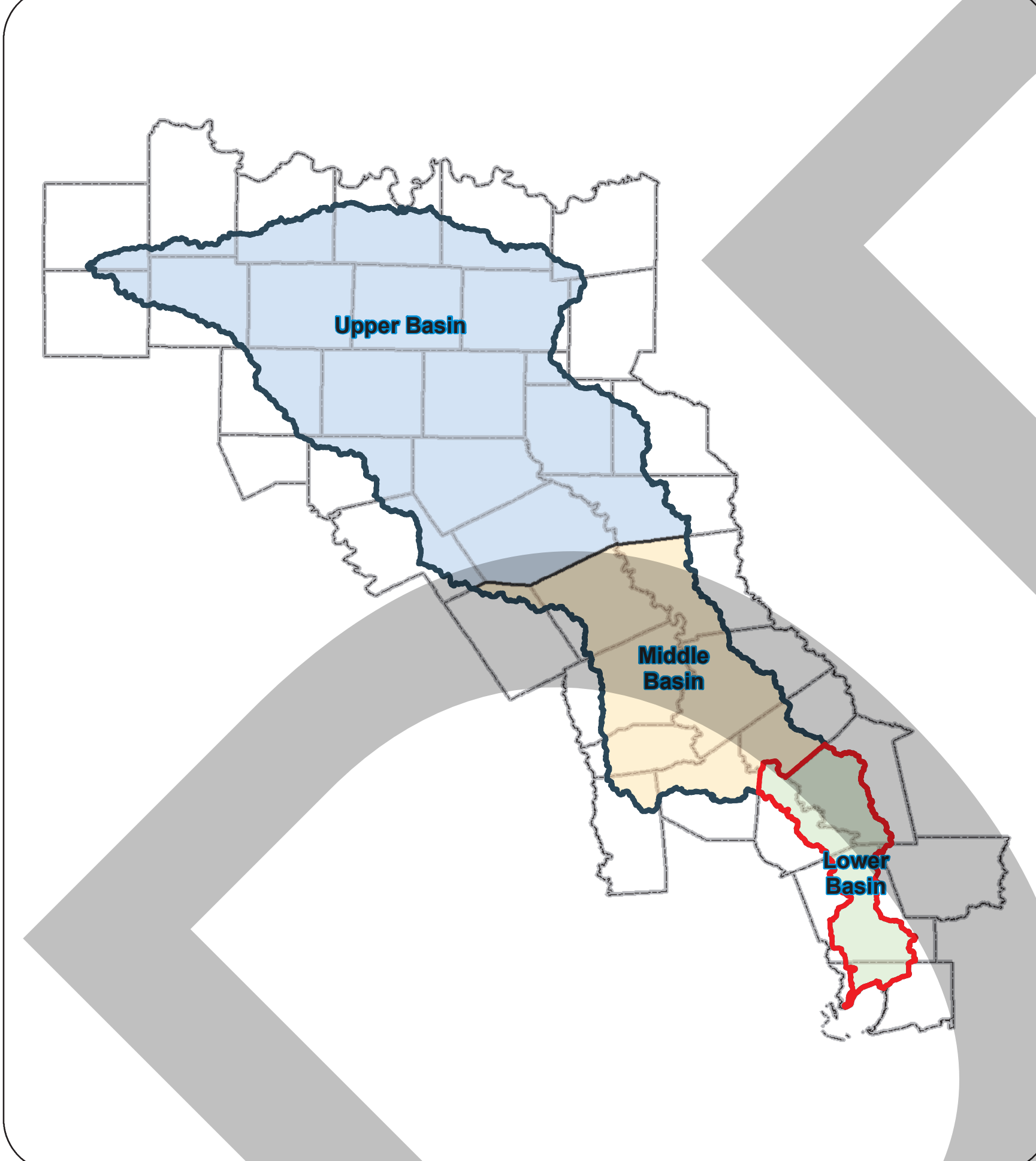
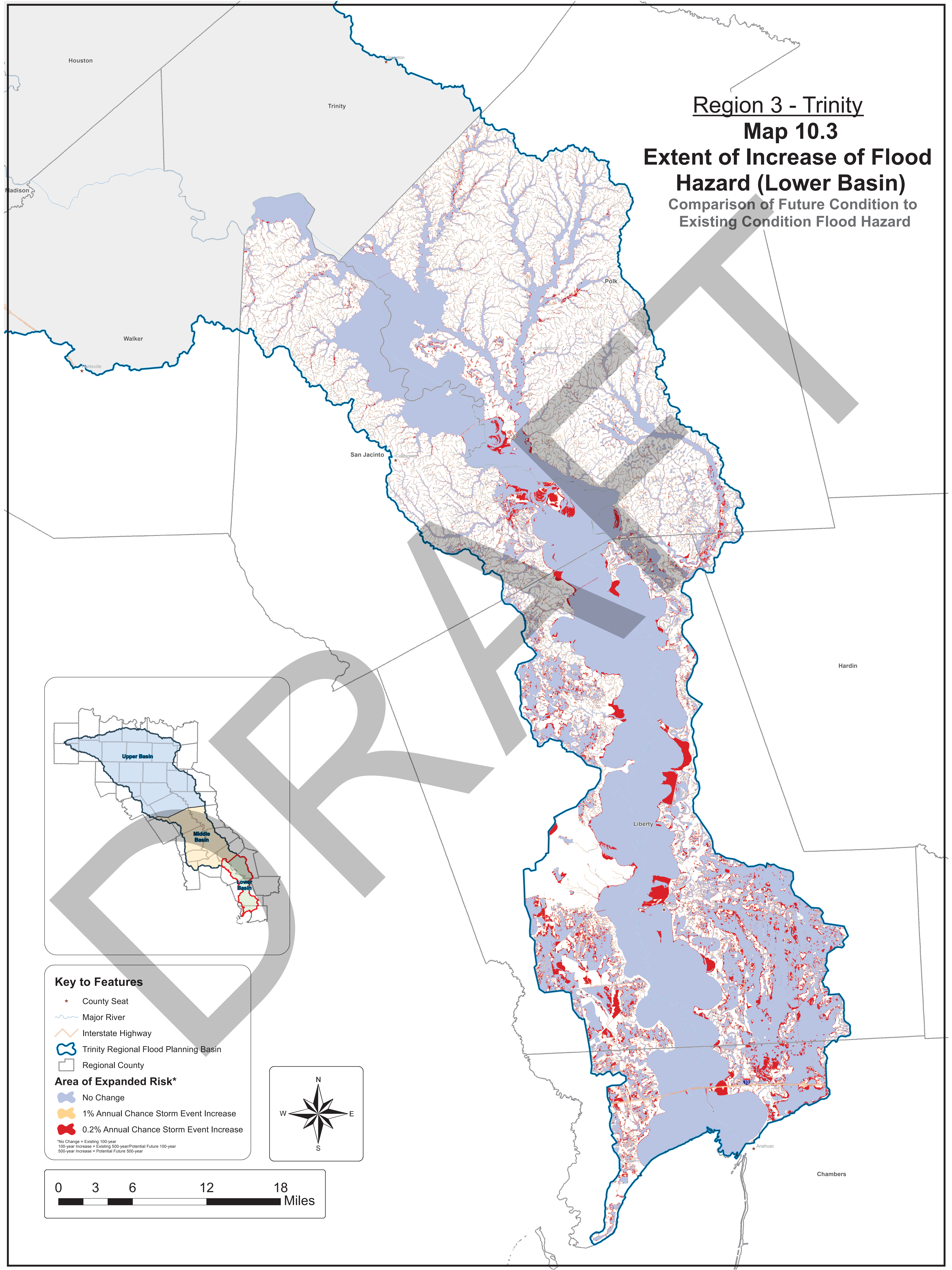
Area of Expanded Risk*

- No Change
- 1% Annual Chance Storm Event Increase
- 0.2% Annual Chance Storm Event Increase

*No Change = Existing 100-year
100-year Increase = Existing 500-year/Potential Future 100-year
500-year Increase = Potential Future 500-year



Region 3 - Trinity
Map 10.3
Extent of Increase of Flood Hazard (Lower Basin)
 Comparison of Future Condition to Existing Condition Flood Hazard



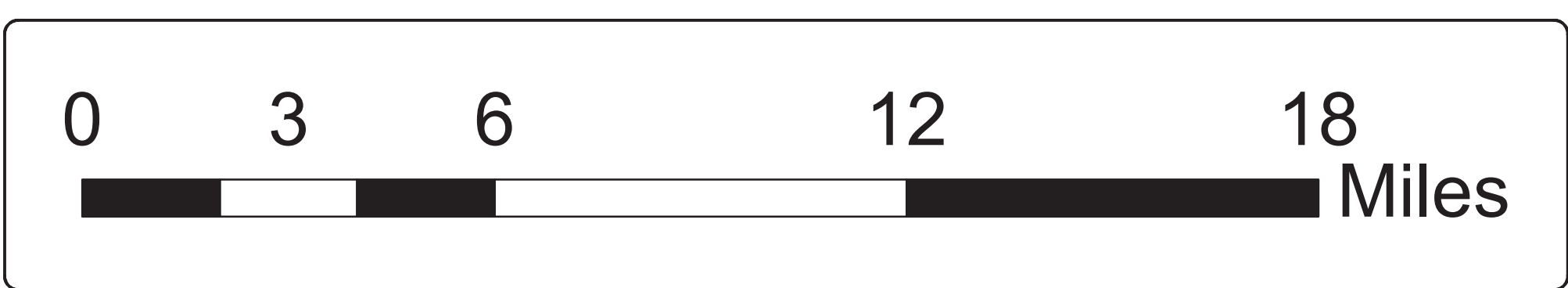
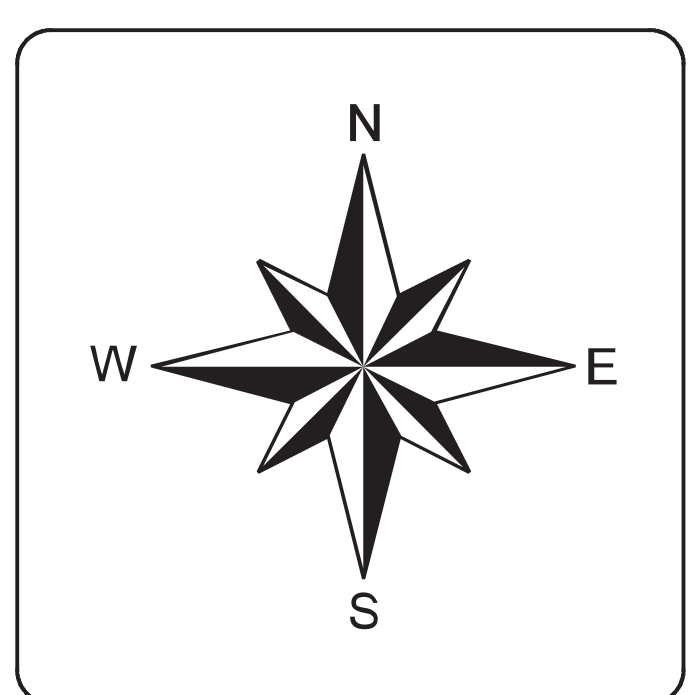
Key to Features

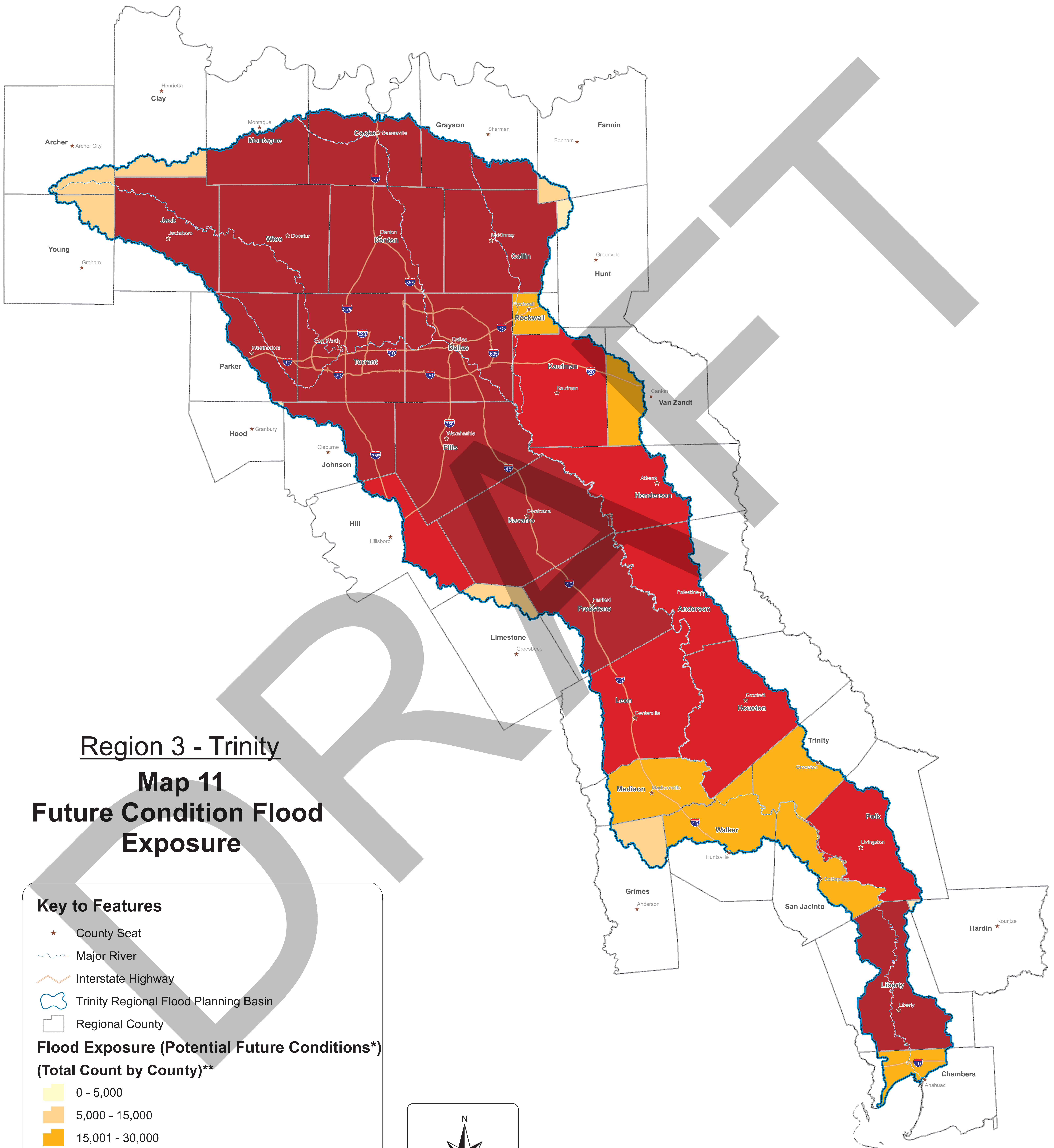
- ★ County Seat
- ~ Major River
- Interstate Highway
- ☞ Trinity Regional Flood Planning Basin
- Regional County

Area of Expanded Risk*

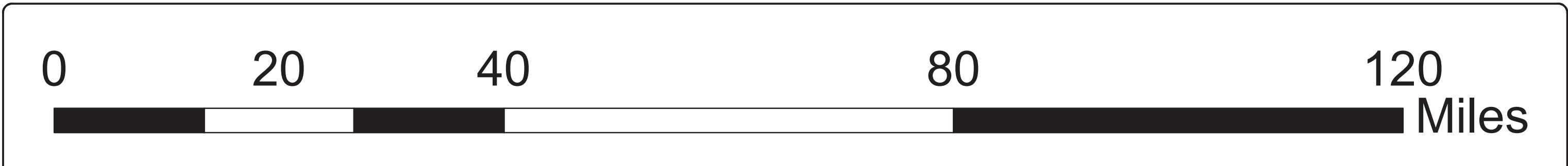
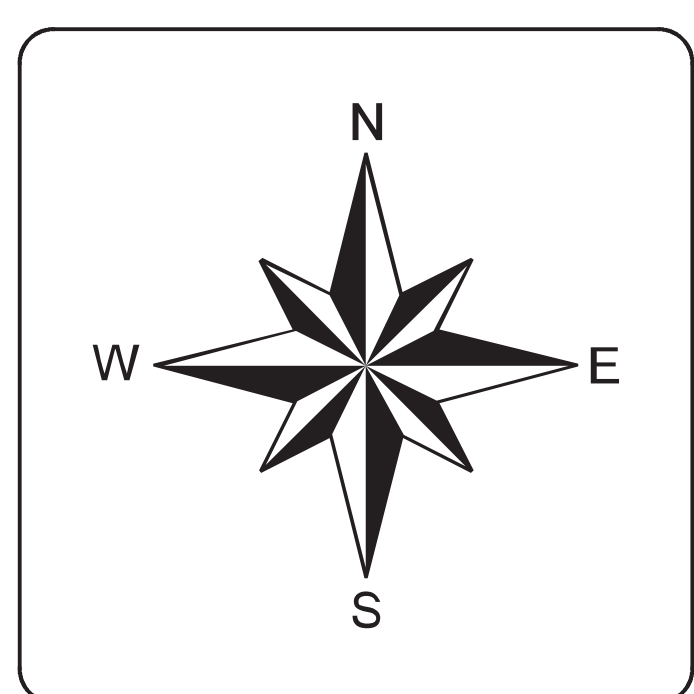
- ☞ No Change
- ☞ 1% Annual Chance Storm Event Increase
- ☞ 0.2% Annual Chance Storm Event Increase

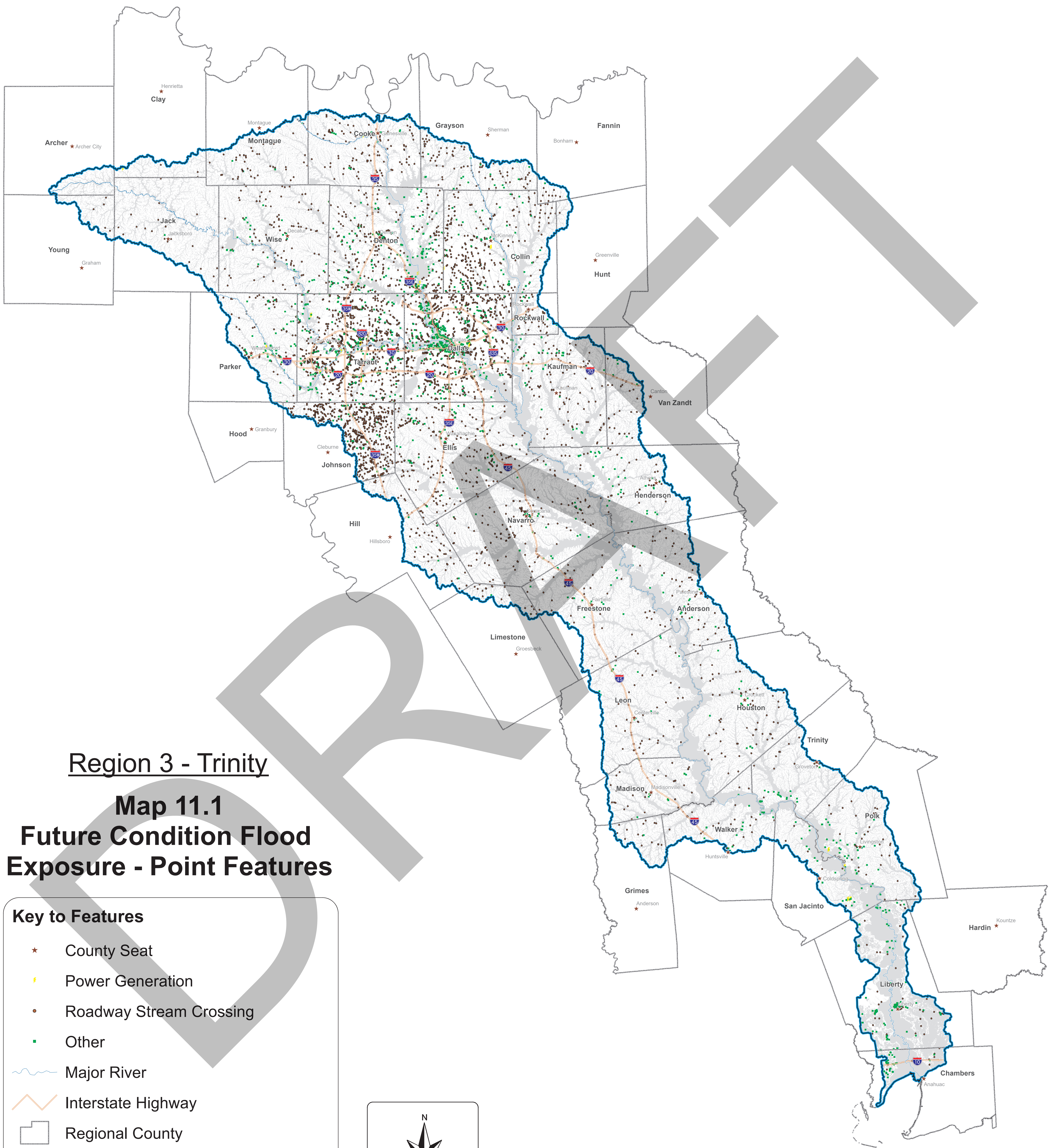
*No Change = Existing 100-year
 100-year Increase = Existing 500-year/Potential Future 100-year
 500-year Increase = Potential Future 500-year





*Combination of 1% and 0.2% Annual Chance Storm Events
 **Total Count in FutFidExpAll layer (buildings, critical facilities, LWC, roadway stream crossings, agricultural land, etc.)



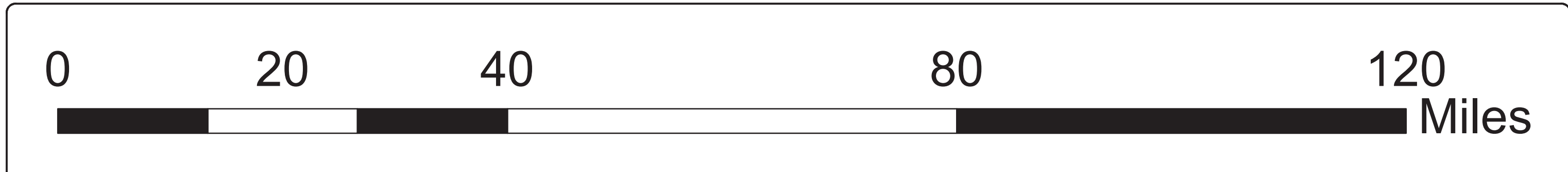
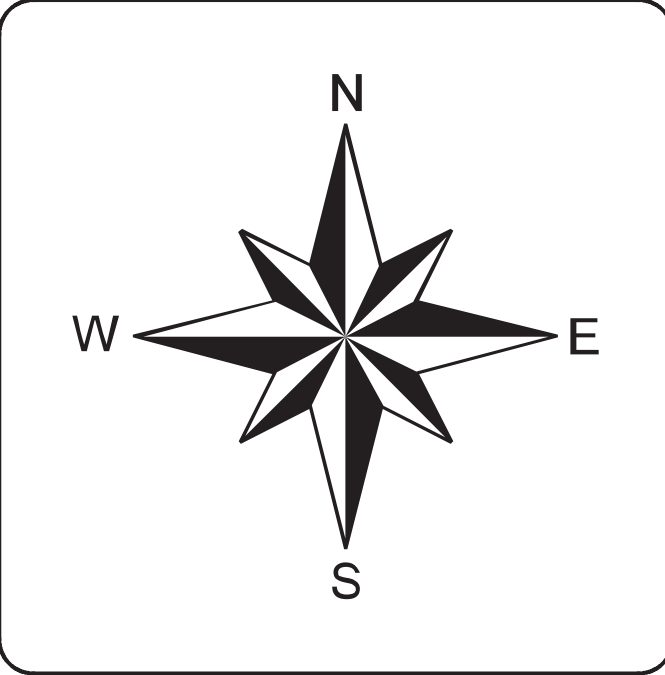


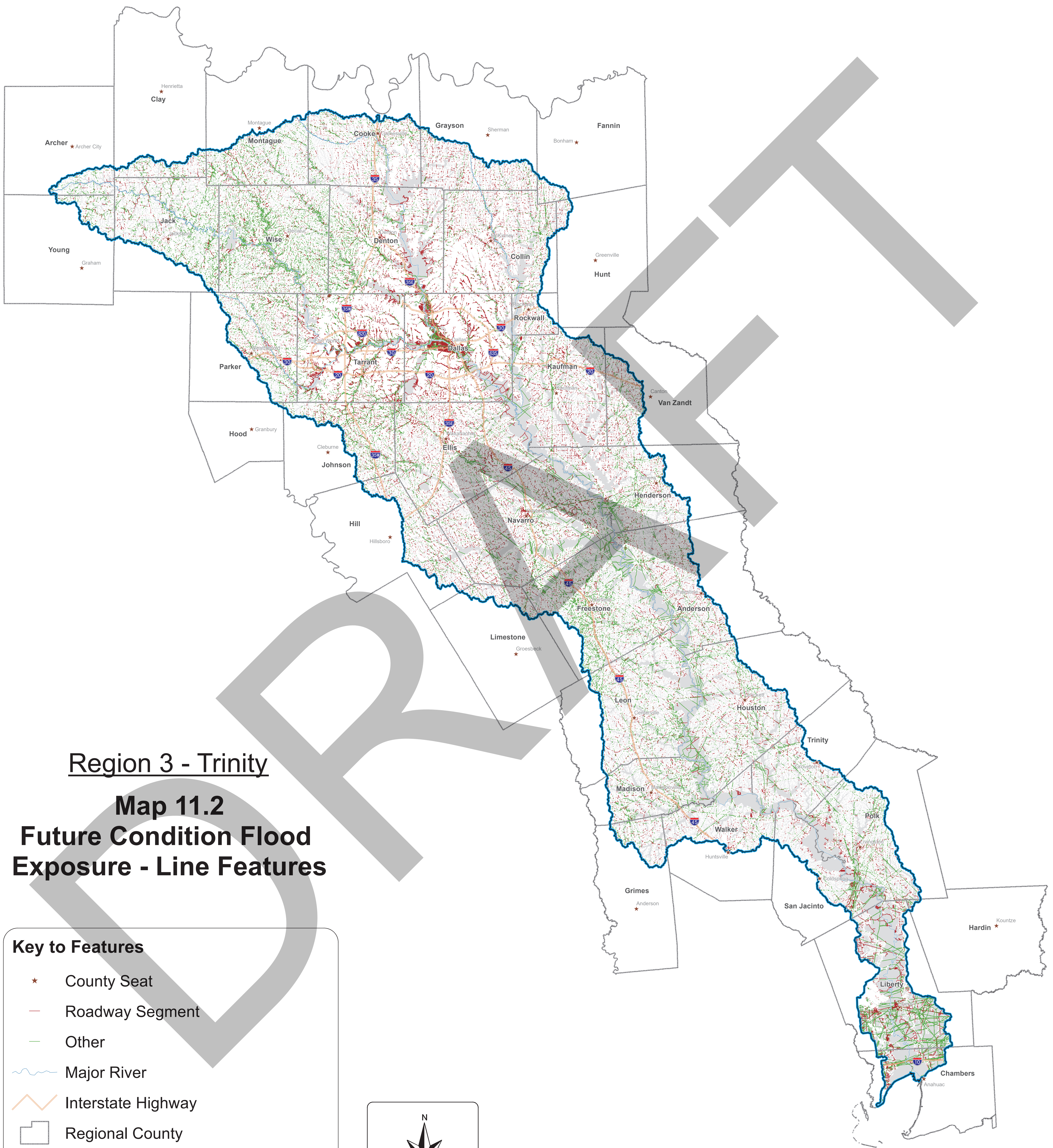
Region 3 - Trinity

**Map 11.1
Future Condition Flood
Exposure - Point Features**

Key to Features

- ★ County Seat
- ⚡ Power Generation
- Roadway Stream Crossing
- Other
- ~ Major River
- Interstate Highway
- Regional County
- ☁ Future Flood Hazard (FutFldHazard)
- 🔵 Trinity Regional Flood Planning Basin



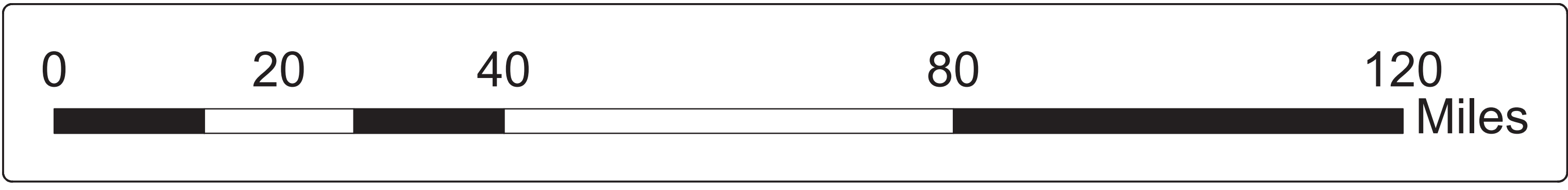
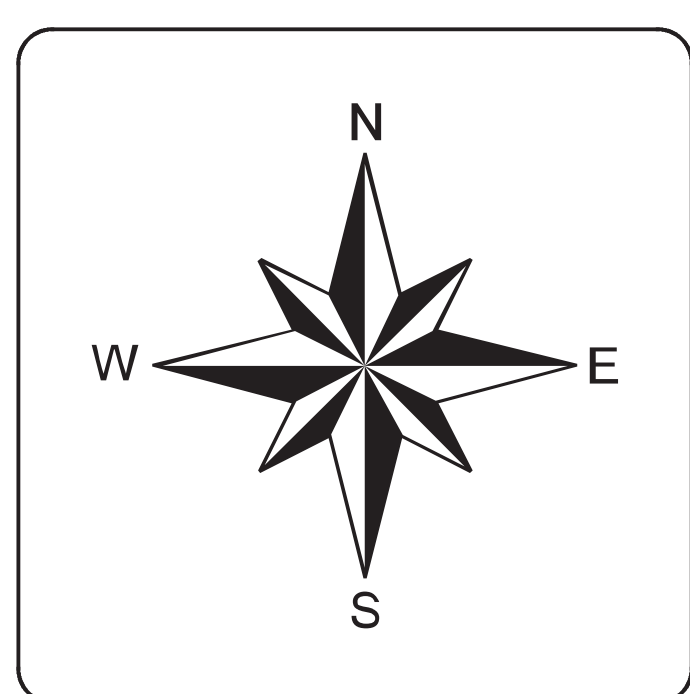


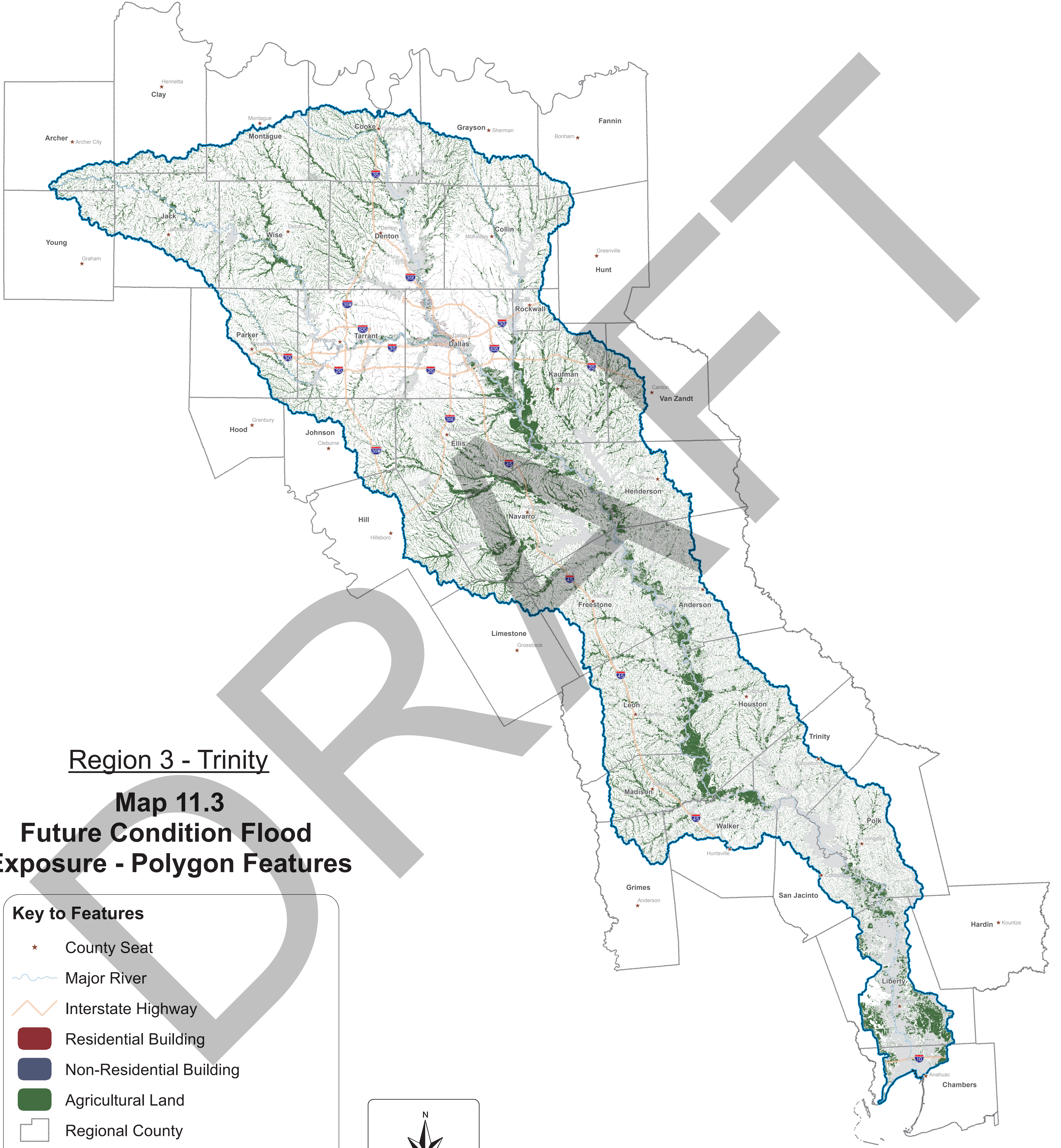
Region 3 - Trinity

**Map 11.2
Future Condition Flood
Exposure - Line Features**

Key to Features

- ★ County Seat
- Roadway Segment
- Other
- ~ Major River
- Interstate Highway
- Regional County
- Future Flood Hazard (FutFldHazard)
- Trinity Regional Flood Planning Basin



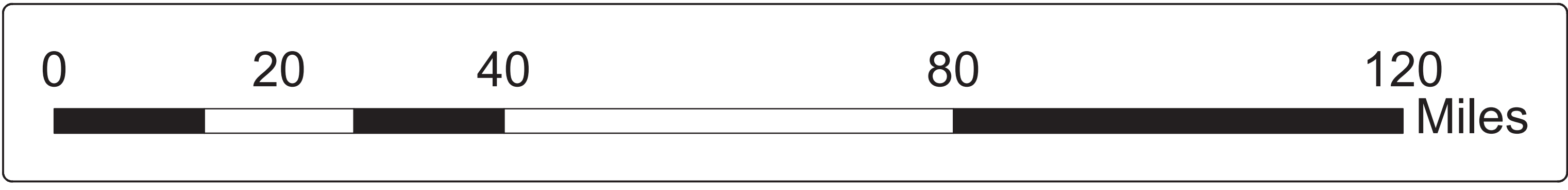
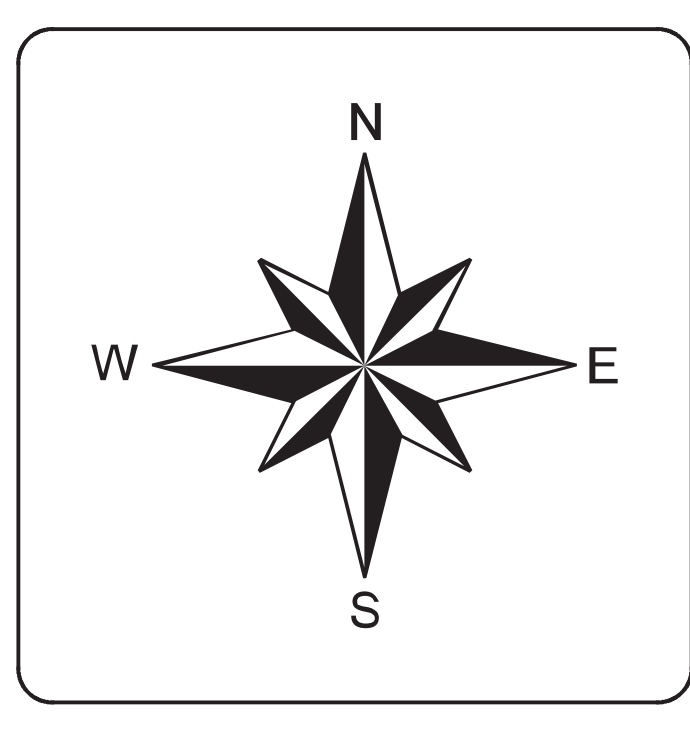


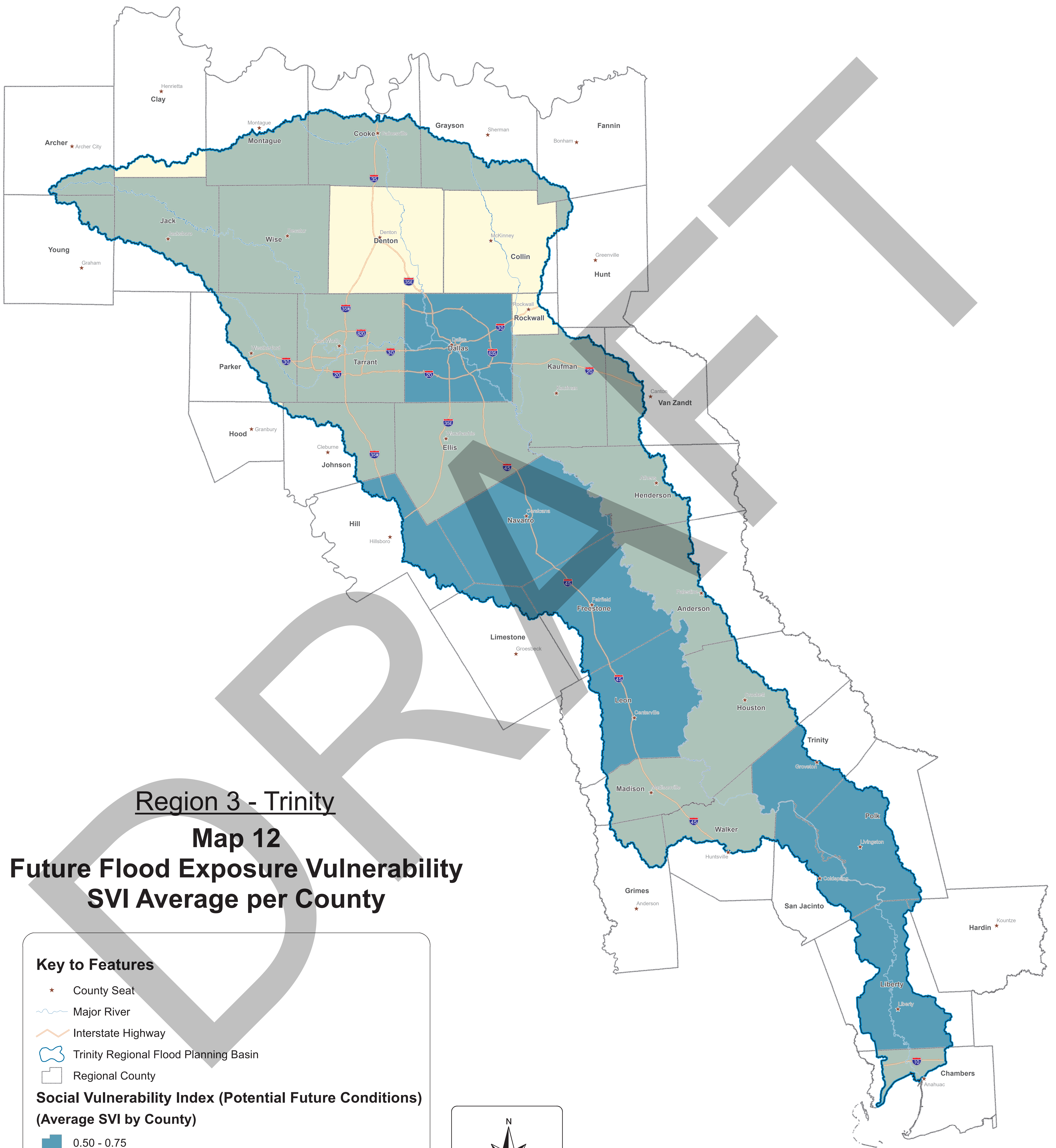
Region 3 - Trinity

**Map 11.3
Future Condition Flood
Exposure - Polygon Features**

Key to Features

- ★ County Seat
- ~ Major River
- Interstate Highway
- Residential Building
- Non-Residential Building
- Agricultural Land
- Regional County
- Future Flood Hazard (FutFldHazard)
- Trinity Regional Flood Planning Basin





Region 3 - Trinity

Map 12

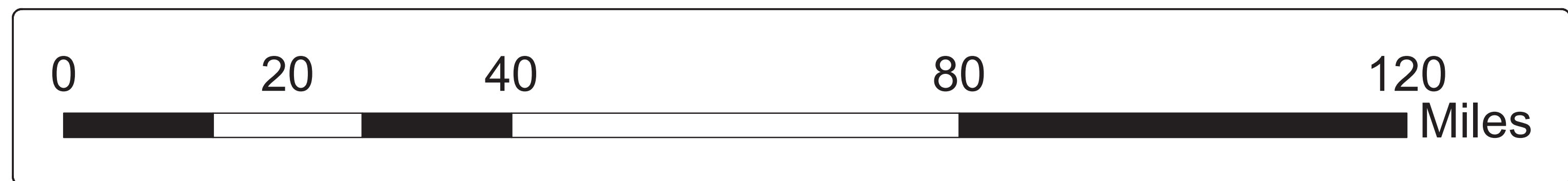
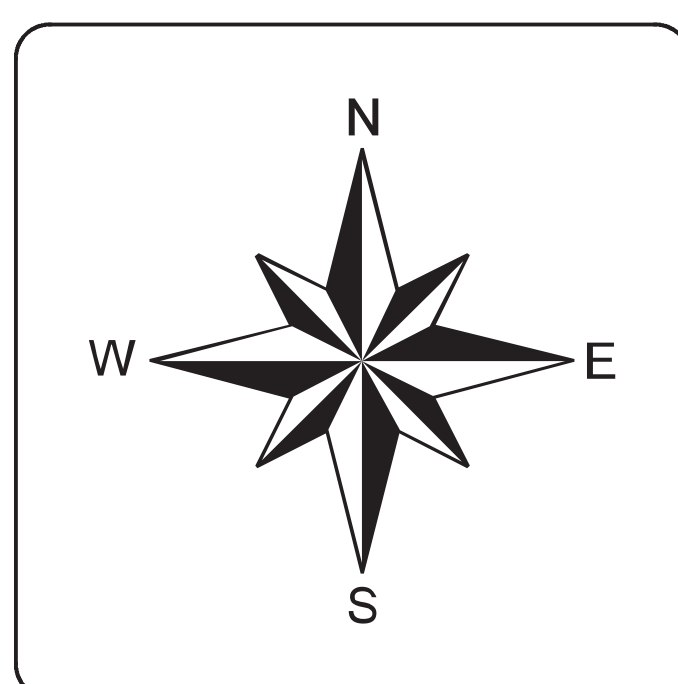
Future Flood Exposure Vulnerability SVI Average per County

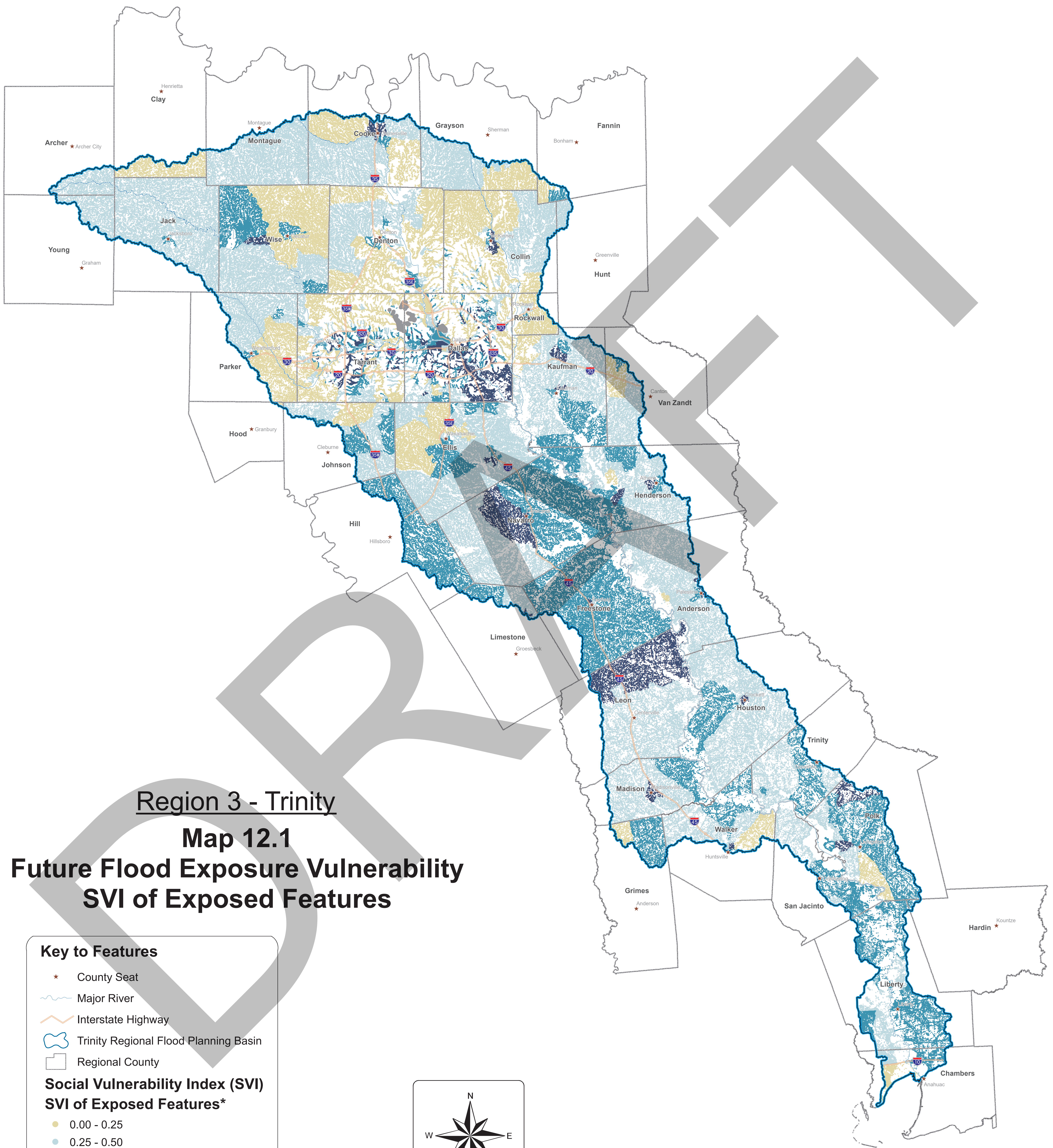
Key to Features

- ★ County Seat
- ~ Major River
- Interstate Highway
- ☞ Trinity Regional Flood Planning Basin
- Regional County

Social Vulnerability Index (Potential Future Conditions) (Average SVI by County)

- 0.50 - 0.75
- 0.25 - 0.50
- 0.00 - 0.25





Region 3 - Trinity

Map 12.1

**Future Flood Exposure Vulnerability
SVI of Exposed Features**

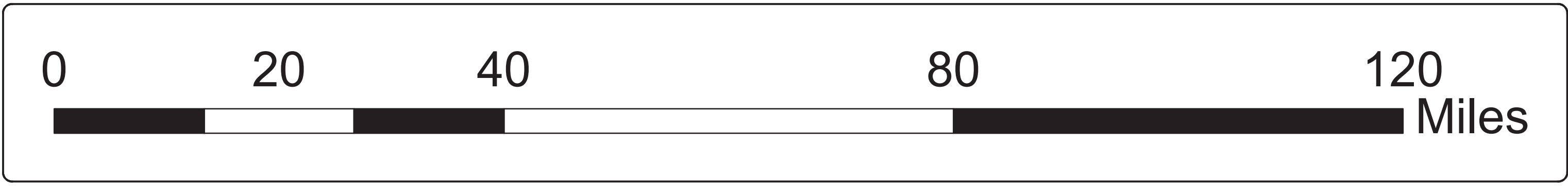
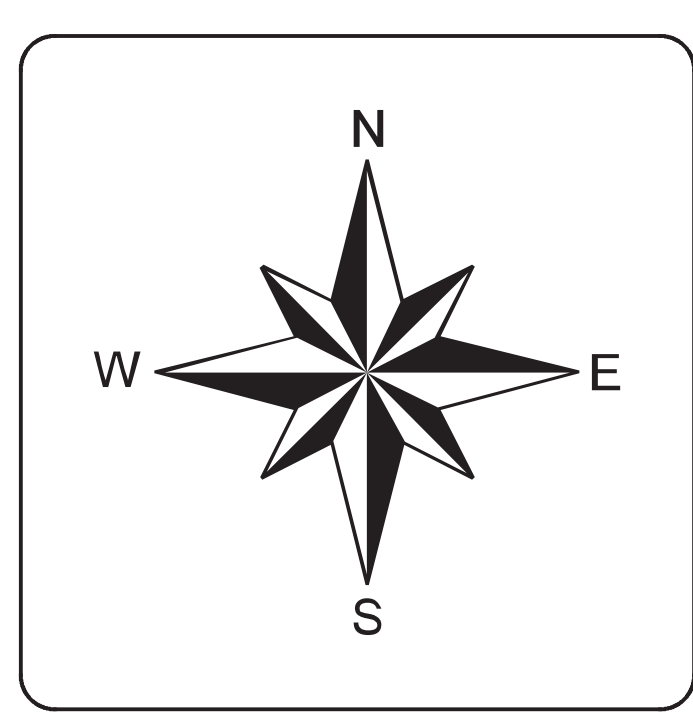
Key to Features

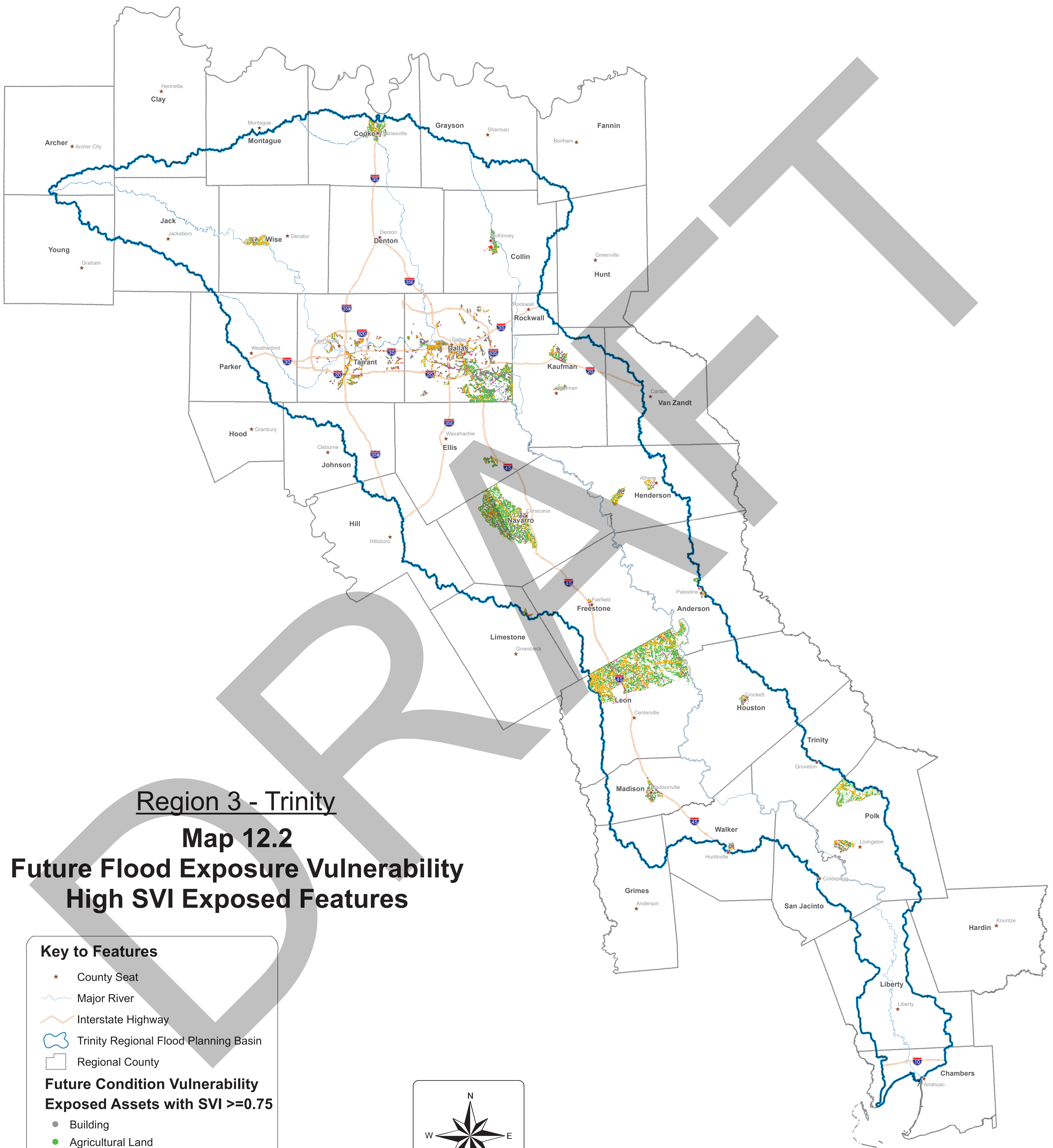
- ★ County Seat
- ~ Major River
- Interstate Highway
- Trinity Regional Flood Planning Basin
- Regional County

**Social Vulnerability Index (SVI)
SVI of Exposed Features***

- 0.00 - 0.25
- 0.25 - 0.50
- 0.50 - 0.75
- 0.75 - 1.00
- NoData

*SVI Data is by Census Tract





Region 3 - Trinity

Map 12.2

**Future Flood Exposure Vulnerability
High SVI Exposed Features**

Key to Features

- ★ County Seat
- ~ Major River
- Interstate Highway
- ☞ Trinity Regional Flood Planning Basin
- Regional County

**Future Condition Vulnerability
Exposed Assets with SVI >=0.75**

- Building
- Agricultural Land
- ✚ Power Generation
- Roadway Segment/Stream Crossing
- Other Critical Facilities

