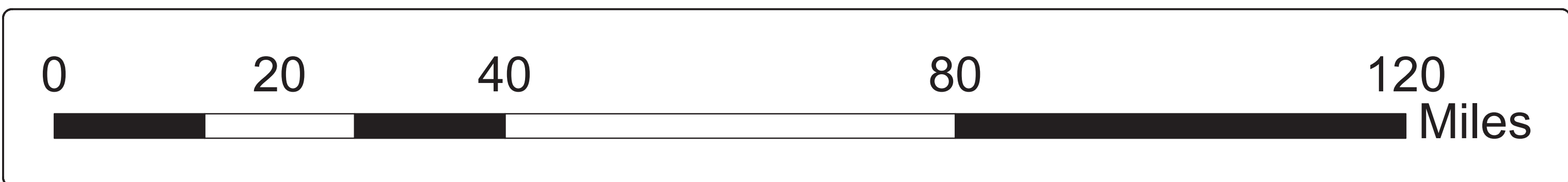
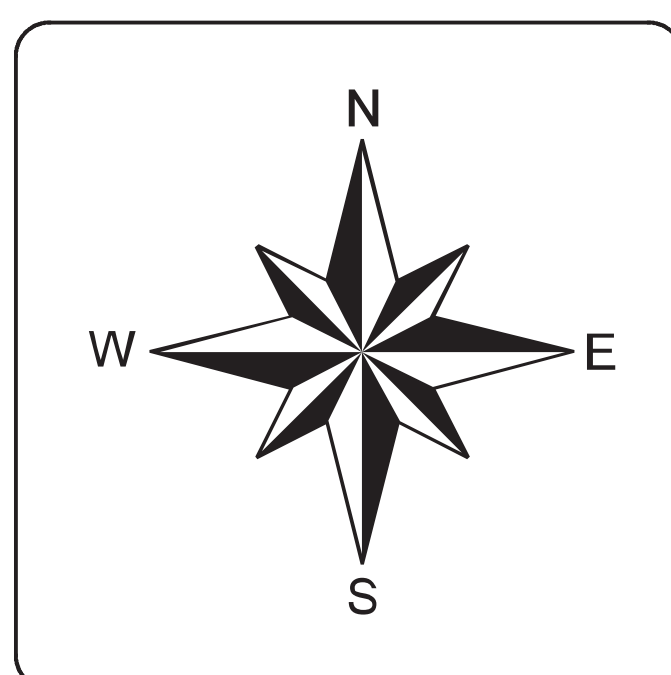


Key to Features

- ★ County Seat
- ~ Major River
- Interstate Highway
- ☞ Trinity Regional Flood Planning Basin
- Regional County

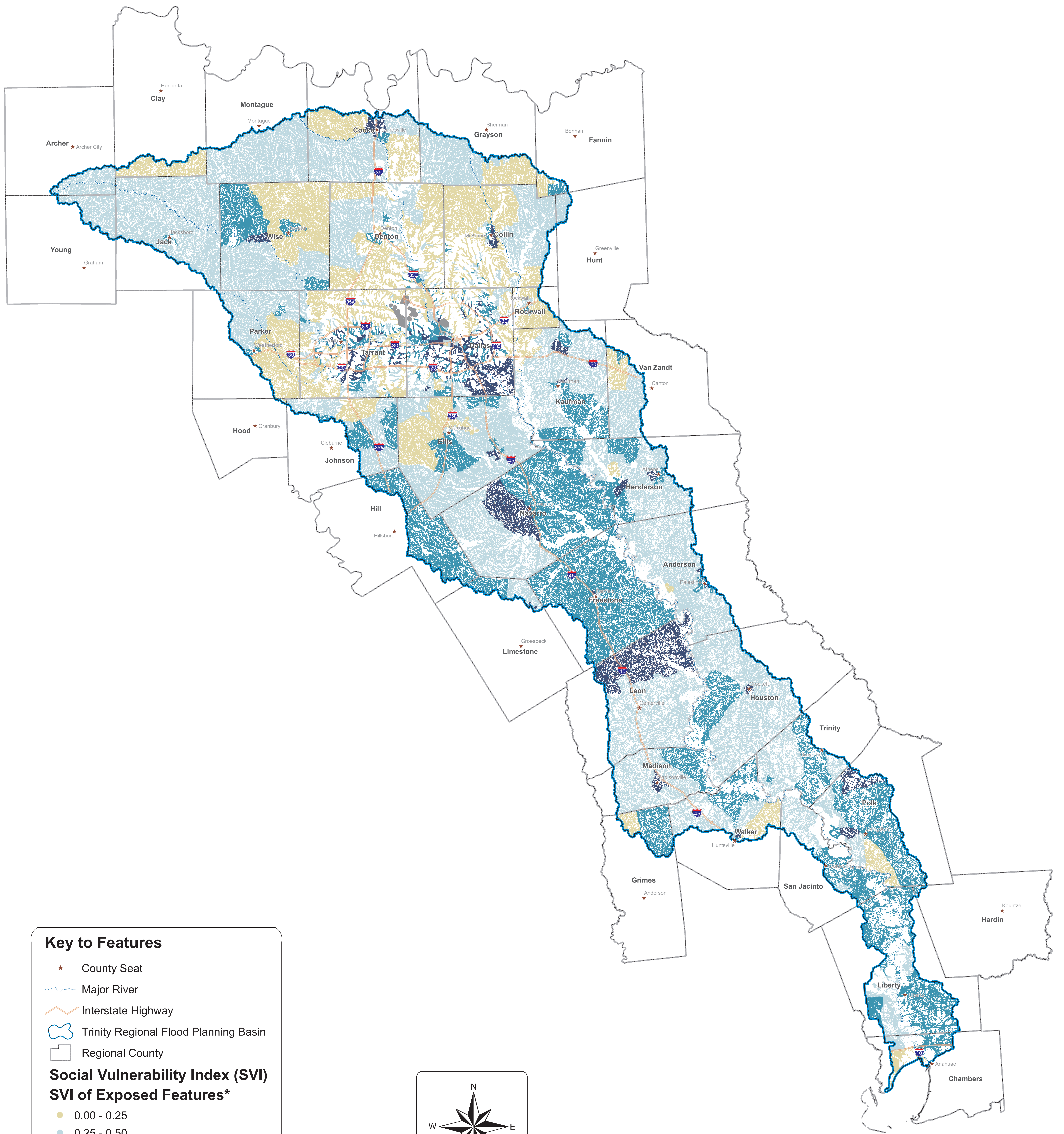
**Social Vulnerability Index (Potential Future Conditions)
(Average SVI by County)**

- 0.50 - 0.75
- 0.25 - 0.50
- 0.00 - 0.25



Region 3 - Trinity

**Map 12
Future Flood Exposure Vulnerability
SVI Average per County**



Region 3 - Trinity

**Map 12.1
Future Flood Exposure Vulnerability
SVI of Exposed Features**

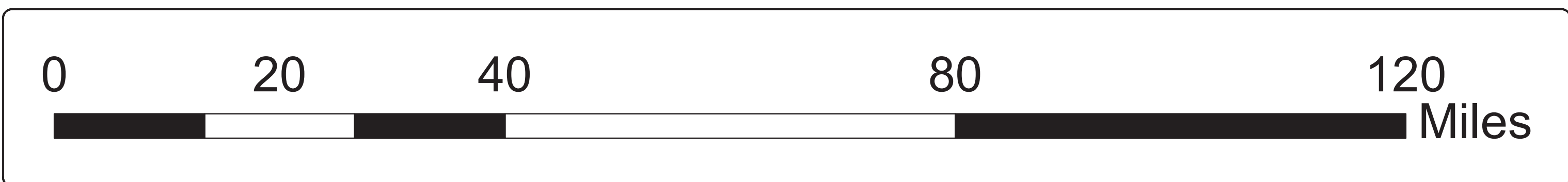
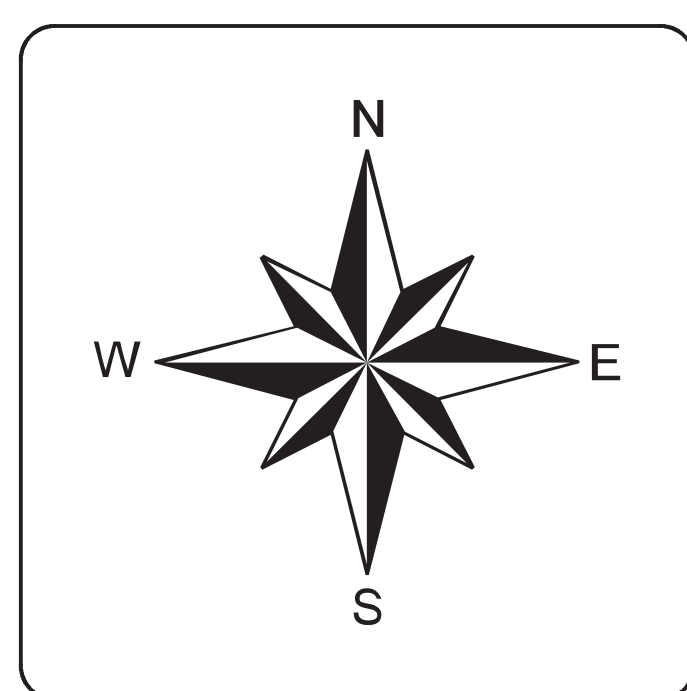
Key to Features

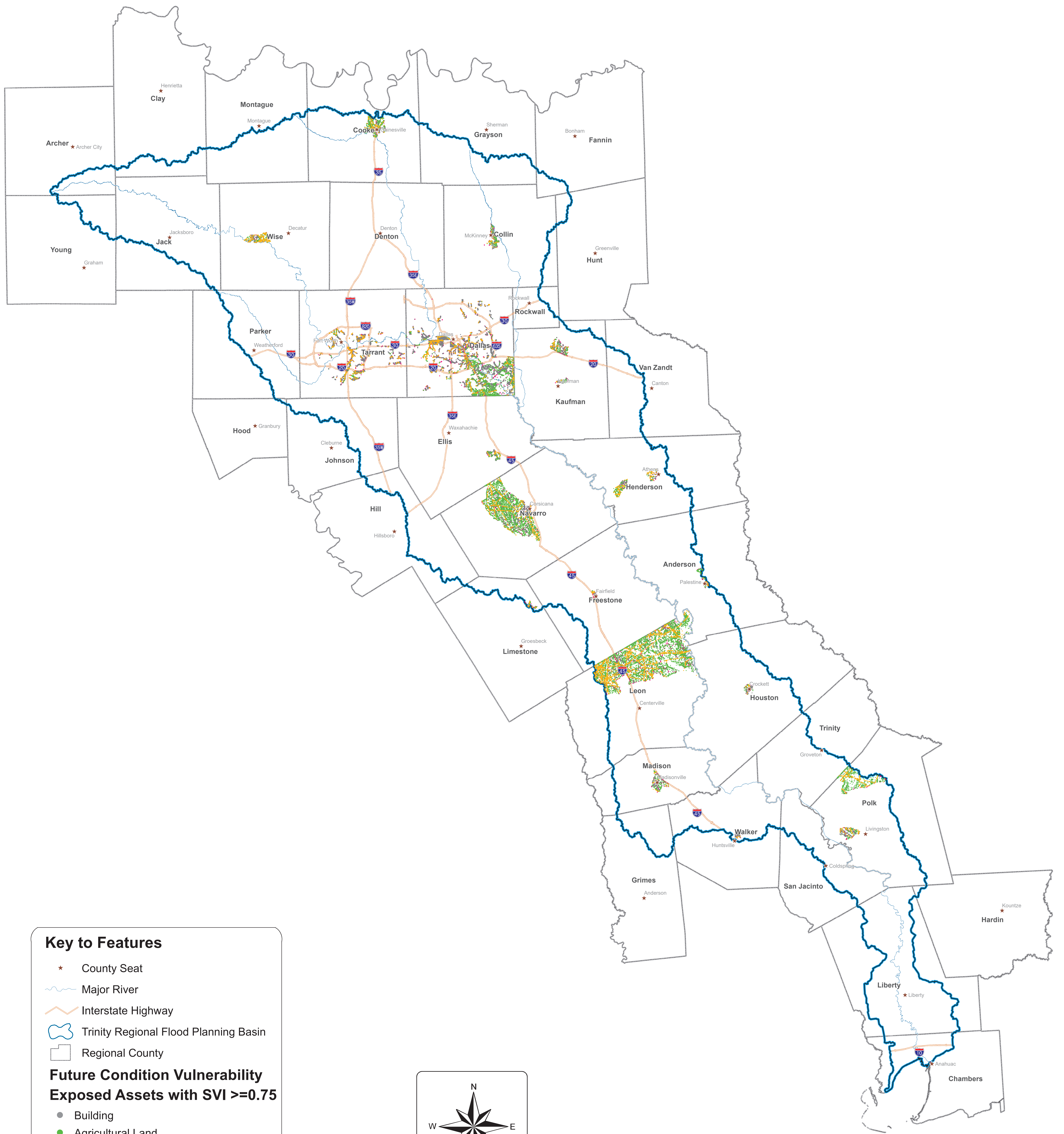
- ★ County Seat
- Major River
- Interstate Highway
- Trinity Regional Flood Planning Basin
- Regional County

**Social Vulnerability Index (SVI)
SVI of Exposed Features***

- 0.00 - 0.25
- 0.25 - 0.50
- 0.50 - 0.75
- 0.75 - 1.00
- NoData

*SVI Data is by Census Tract



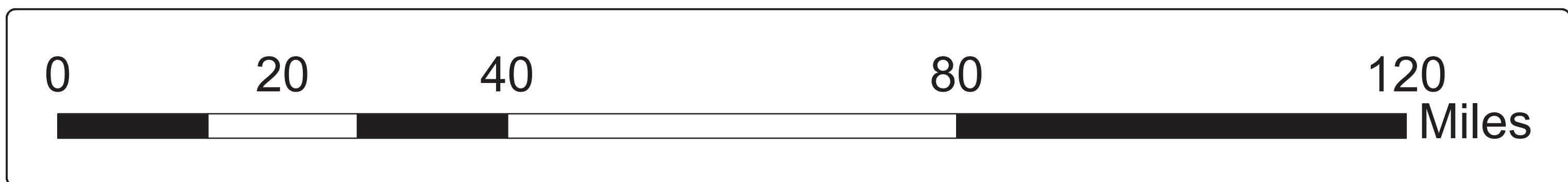
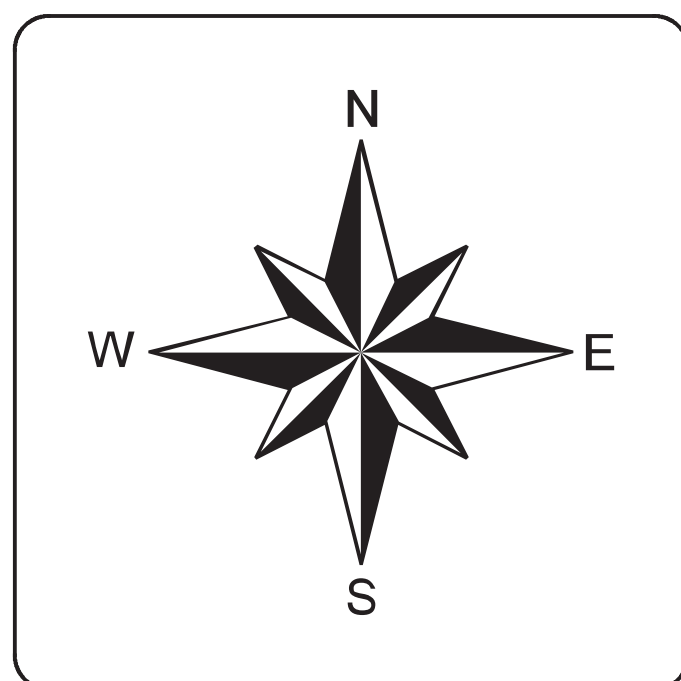


Key to Features

- ★ County Seat
- Major River
- Interstate Highway
- Trinity Regional Flood Planning Basin
- Regional County

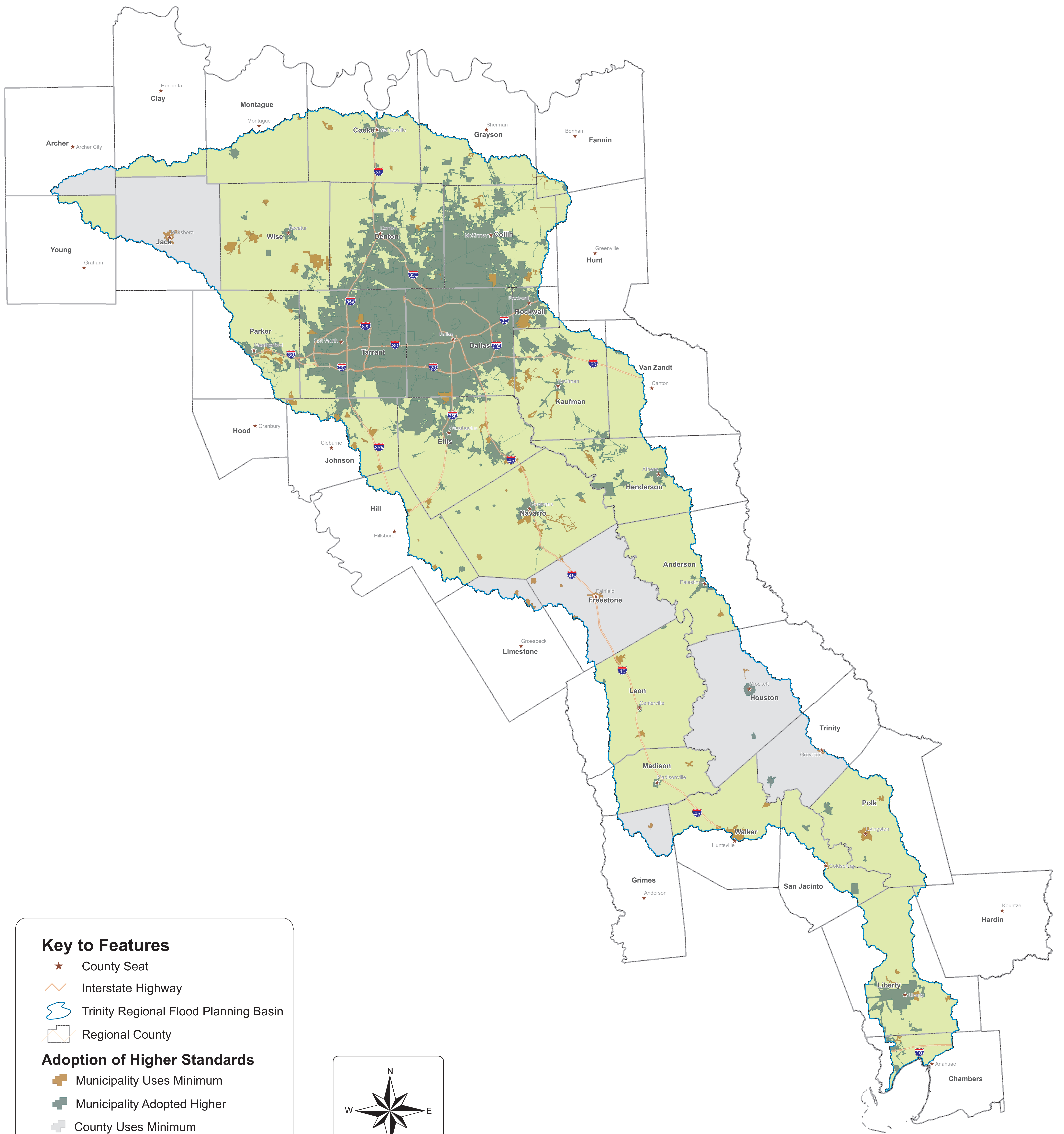
**Future Condition Vulnerability
Exposed Assets with SVI >=0.75**

- Building
- Agricultural Land
- Power Generation
- Roadway Segment/Stream Crossing
- Other Critical Facilities



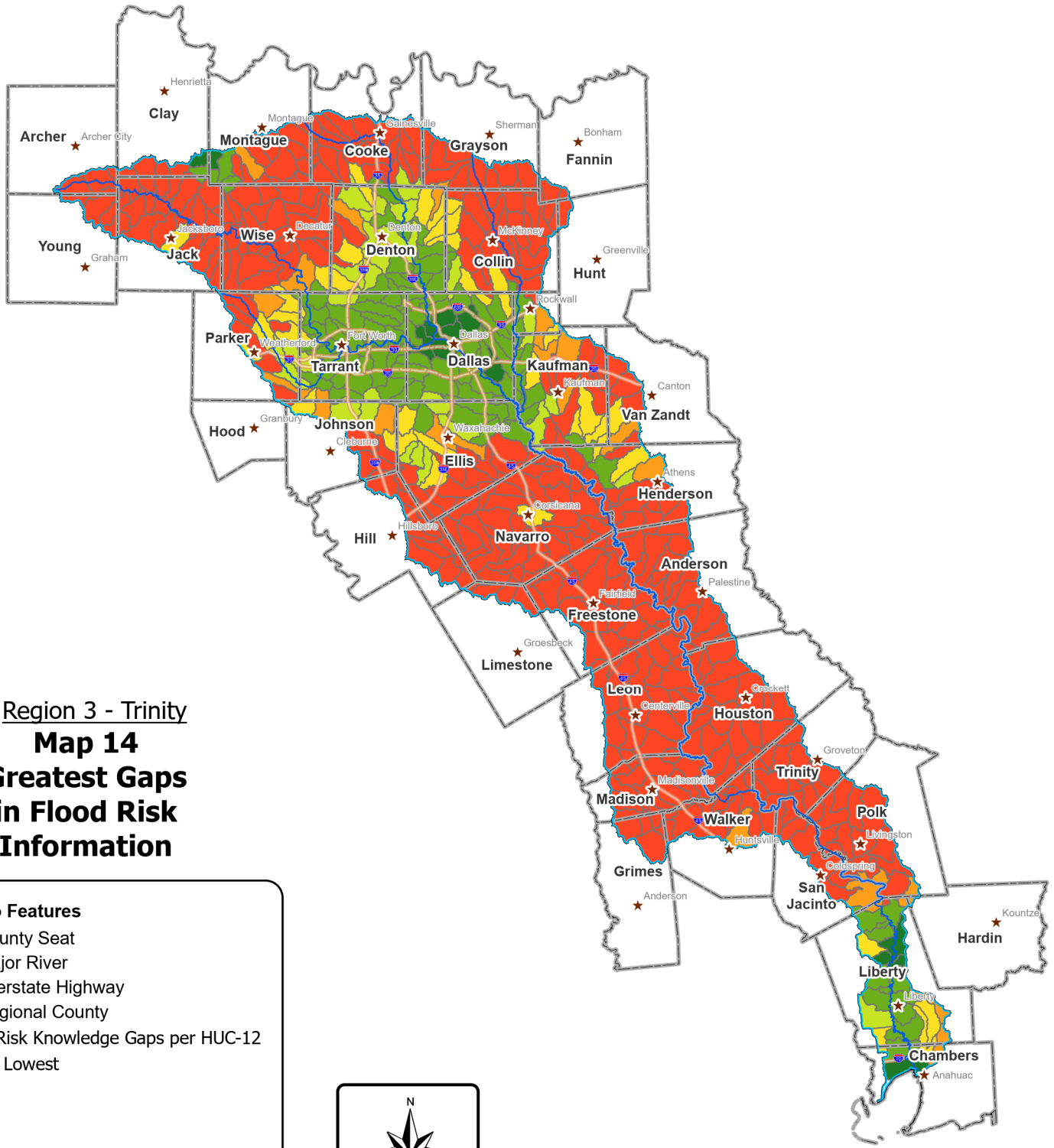
Region 3 - Trinity

**Map 12.2
Future Flood Exposure Vulnerability
High SVI Exposed Features**



Region 3 - Trinity

**Map 13
Floodplain Management
Practices**



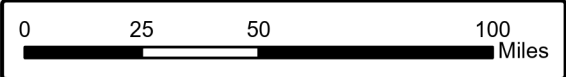
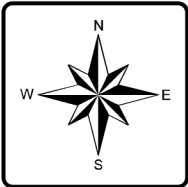
Region 3 - Trinity
Map 14
Greatest Gaps
in Flood Risk
Information

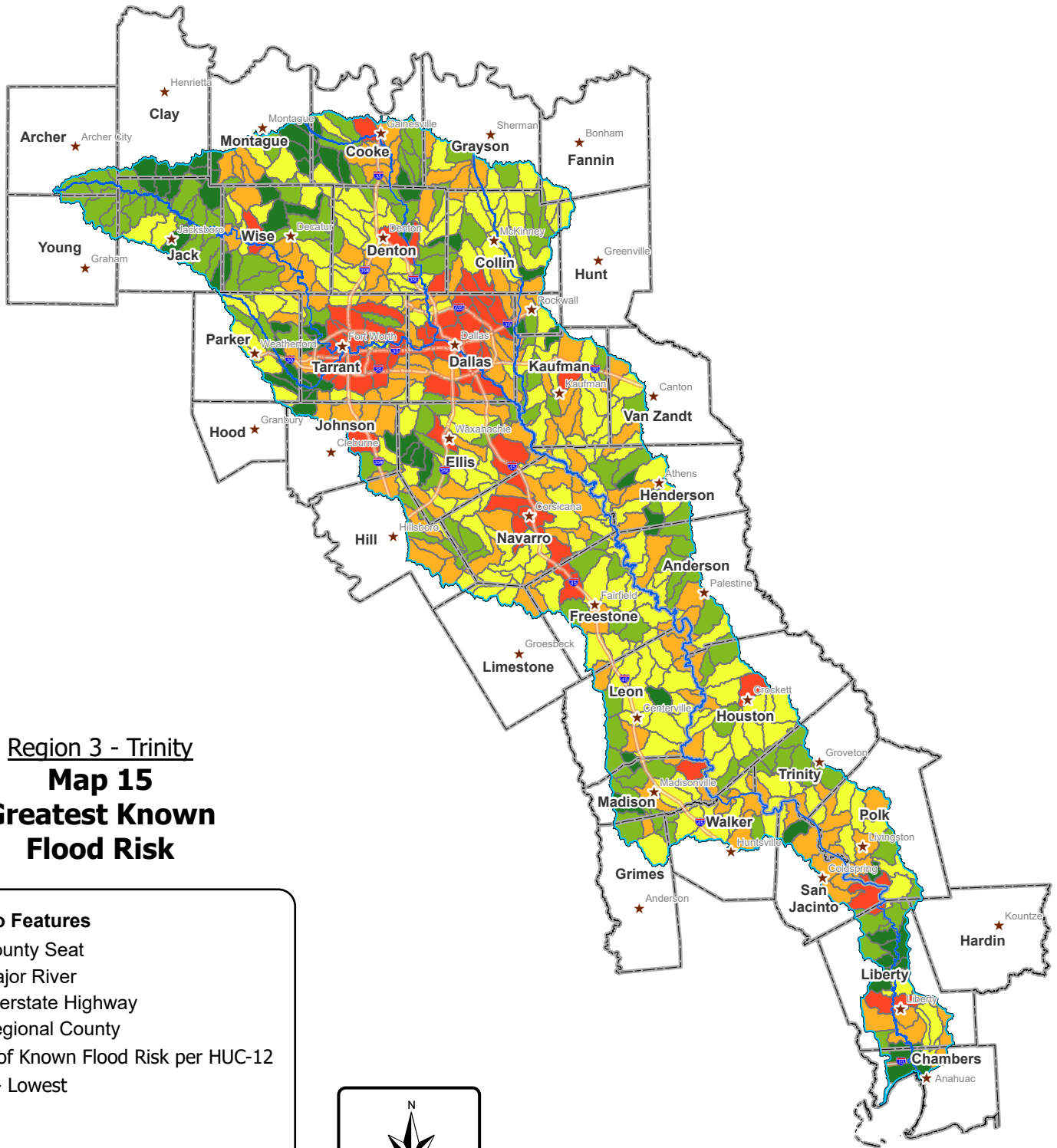
Key to Features

- ★ County Seat
- Major River
- Interstate Highway
- Regional County

Flood Risk Knowledge Gaps per HUC-12

- 0 - Lowest
- 1
- 2
- 3
- 4
- 5 - Highest





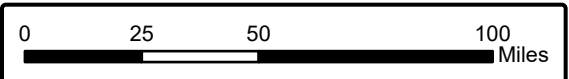
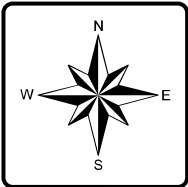
Region 3 - Trinity
Map 15
Greatest Known Flood Risk

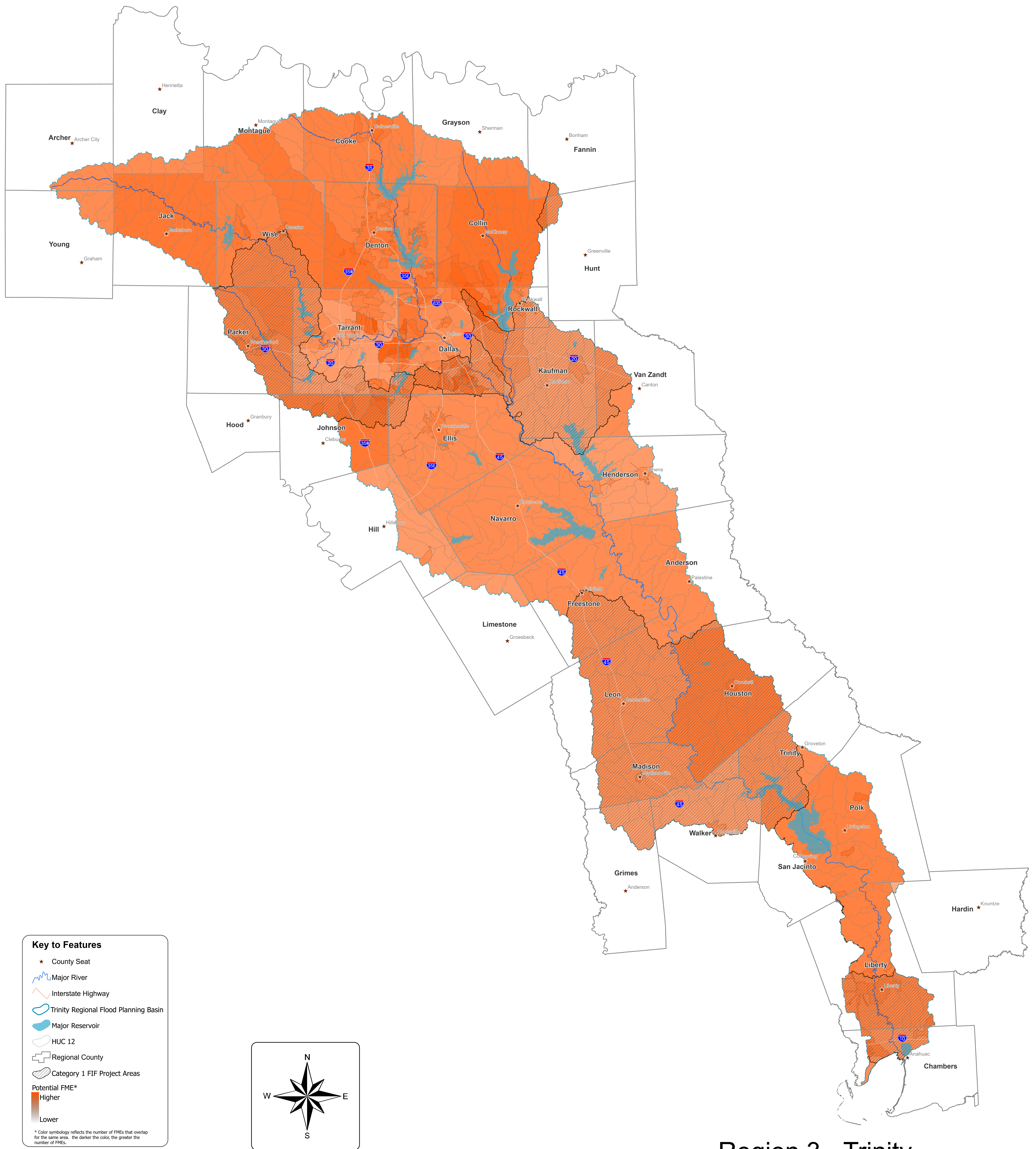
Key to Features

- ★ County Seat
- Major River
- Interstate Highway
- Regional County

Level of Known Flood Risk per HUC-12

- 1 - Lowest
- 2
- 3
- 4
- 5 - Highest

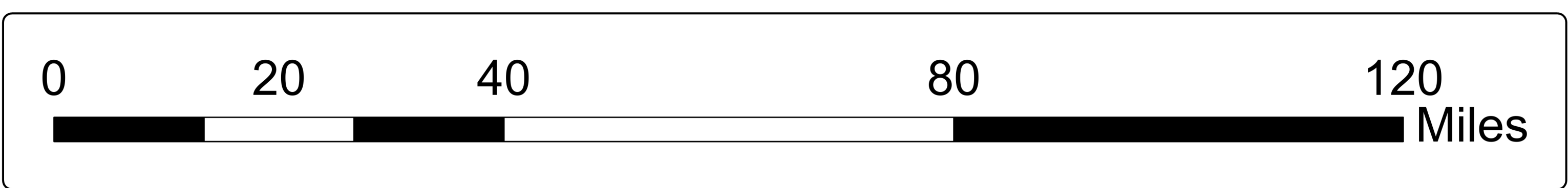
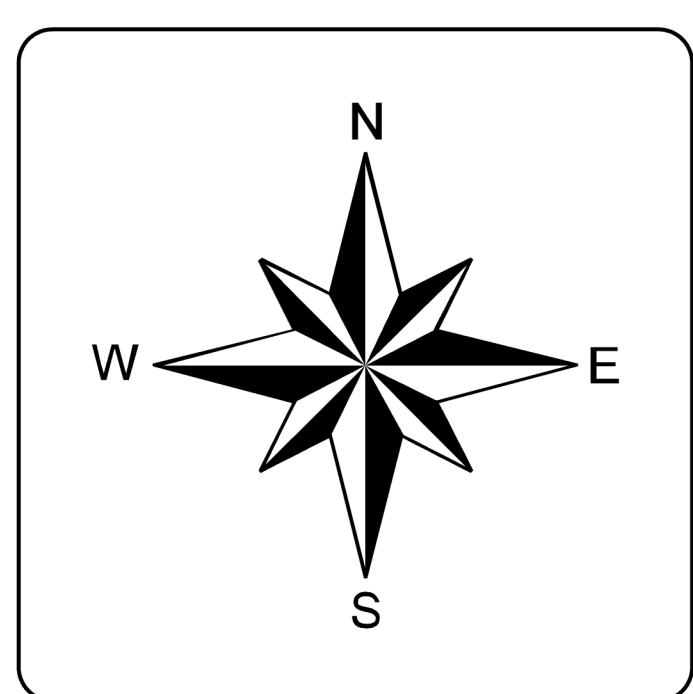




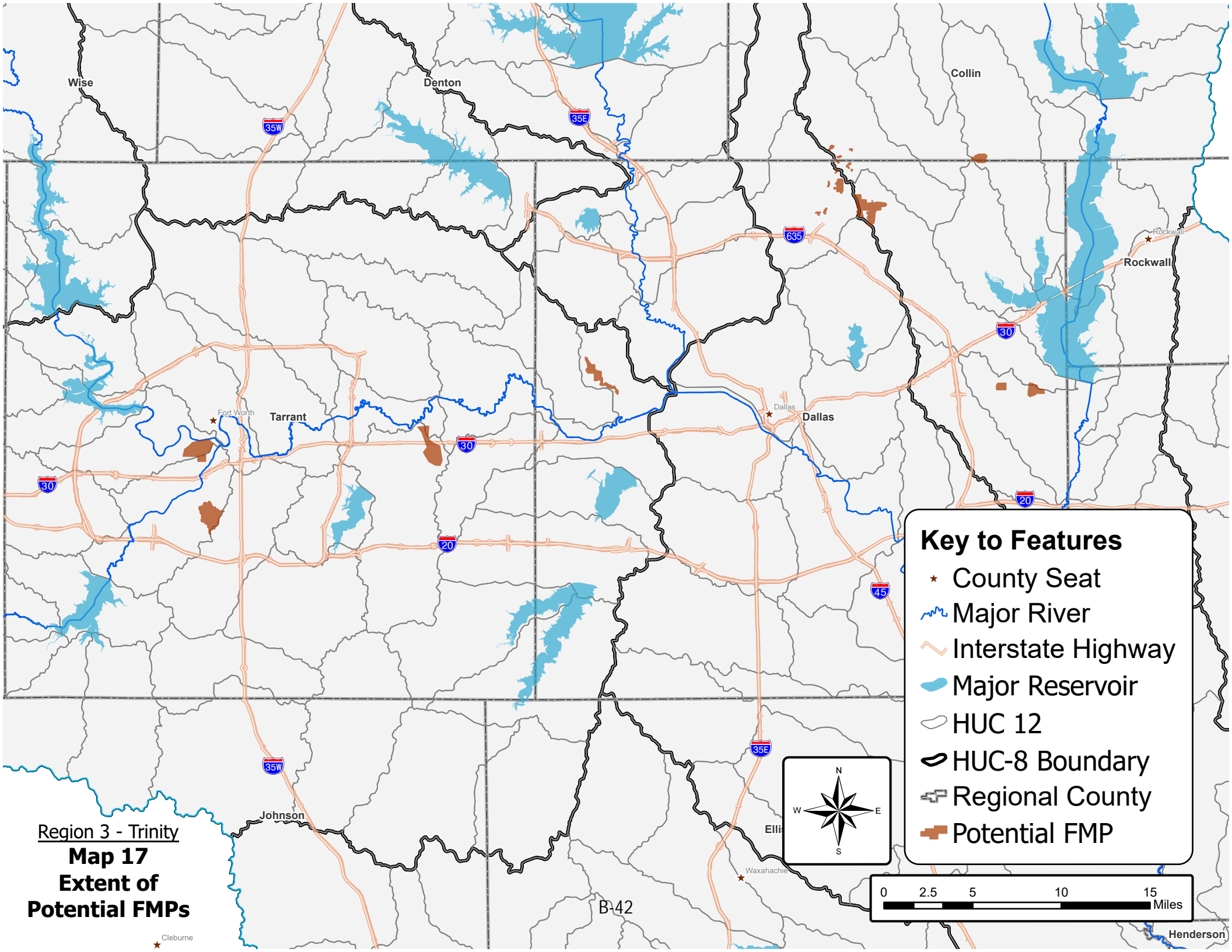
Key to Features

- ★ County Seat
- Major River
- Interstate Highway
- Trinity Regional Flood Planning Basin
- Major Reservoir
- HUC 12
- Regional County
- Category 1 FIF Project Areas
- Potential FME*
 - Higher
 - Lower

* Color symbology reflects the number of FMEs that overlap for the same area. The darker the color, the greater the number of FMEs.



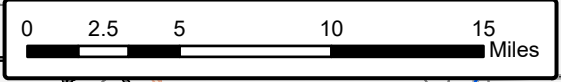
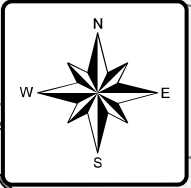
Region 3 - Trinity
Map 16
Extents of Identified
Potential FMEs



Region 3 - Trinity
Map 17
Extent of
Potential FMPs

Key to Features

- ★ County Seat
- Major River
- Interstate Highway
- Major Reservoir
- HUC 12
- HUC-8 Boundary
- Regional County
- Potential FMP



Cleburne

Henderson

B-42

Ellis

Waxahachie

Johnson

Dallas

Fort Worth

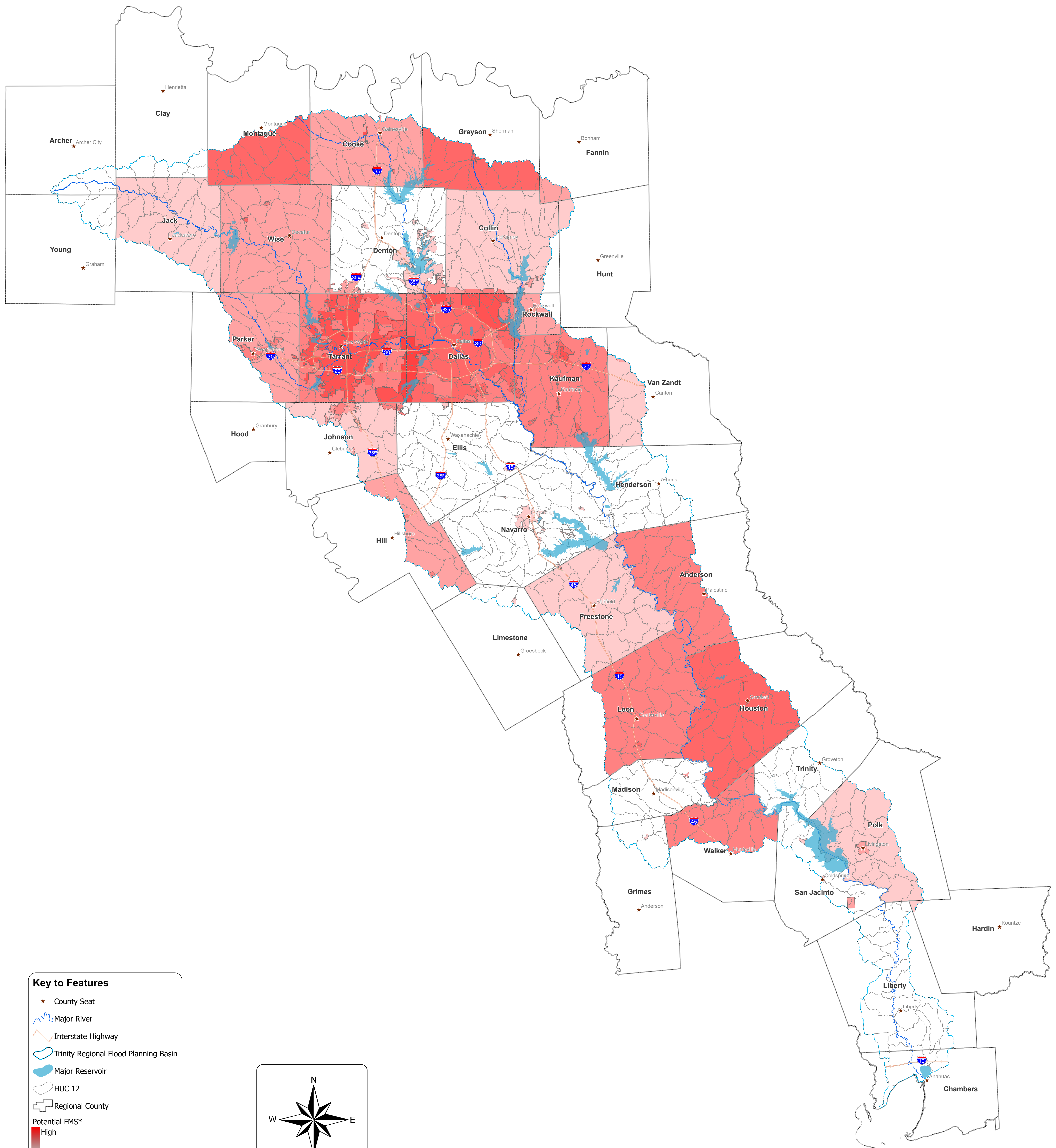
Tarrant

Denton

Collin

Rockwall

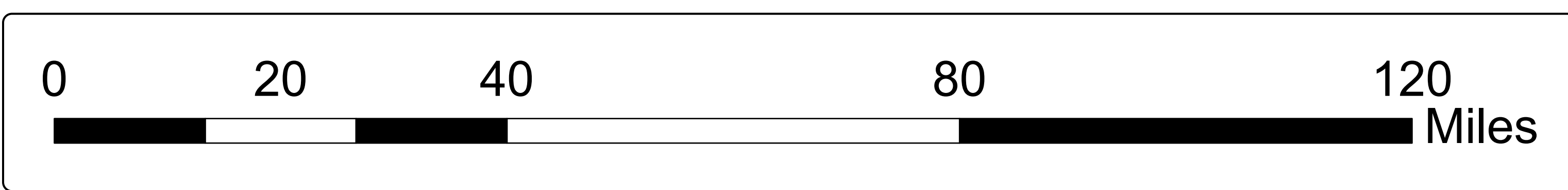
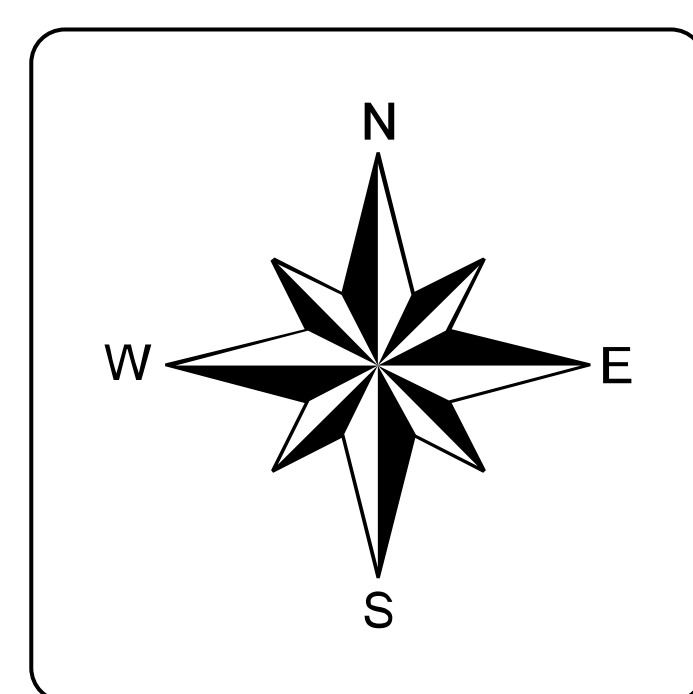
Wise



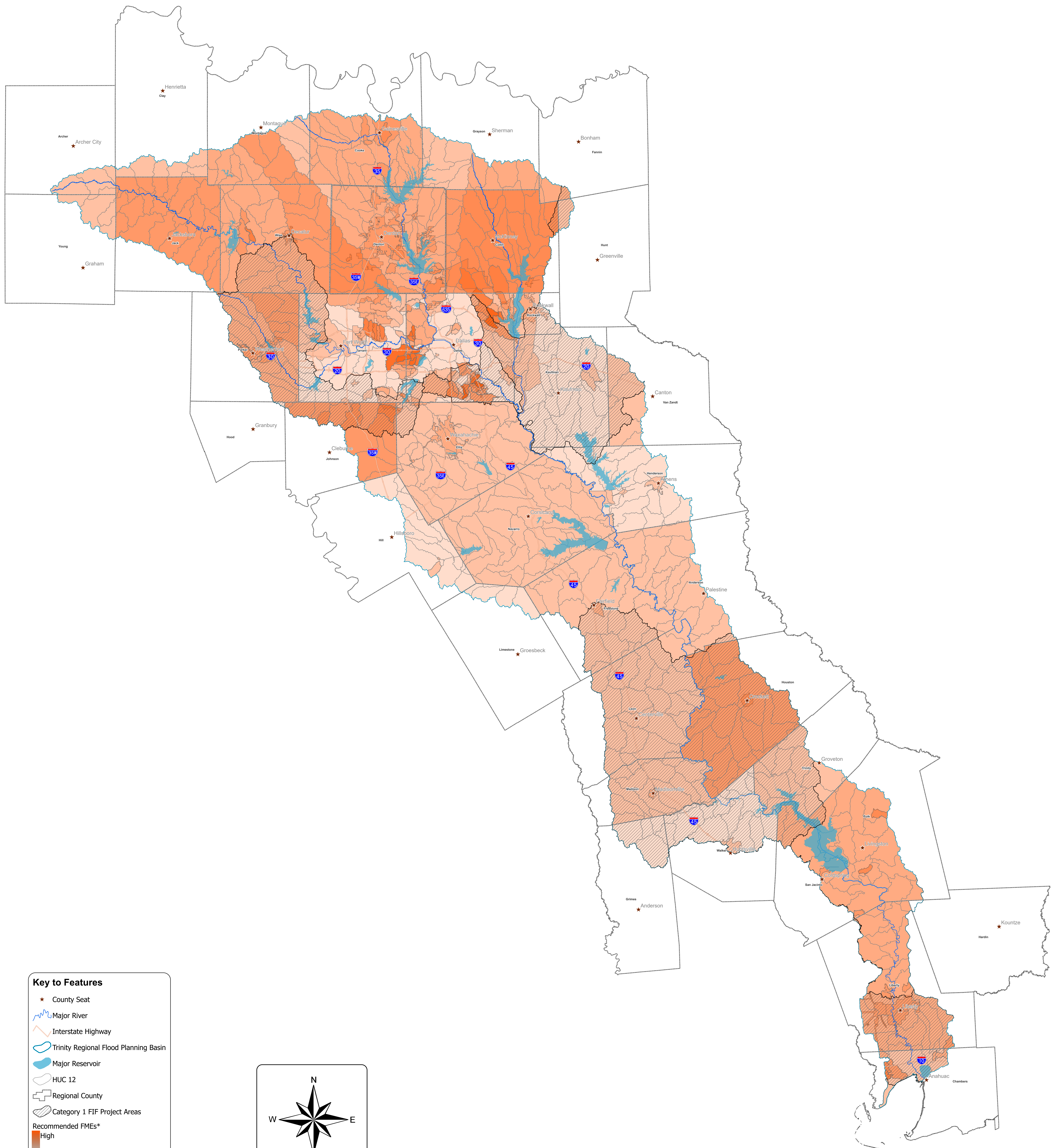
Key to Features

- ★ County Seat
- Major River
- Interstate Highway
- Trinity Regional Flood Planning Basin
- Major Reservoir
- HUC 12
- Regional County
- Potential FMS*
 - High
 - Low

* Color symbology reflects the number of FMSs that overlap for the same area. The darker the color, the greater the number of FMSs.



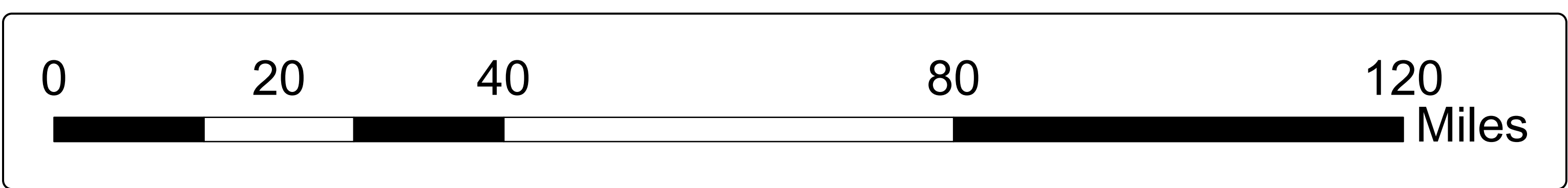
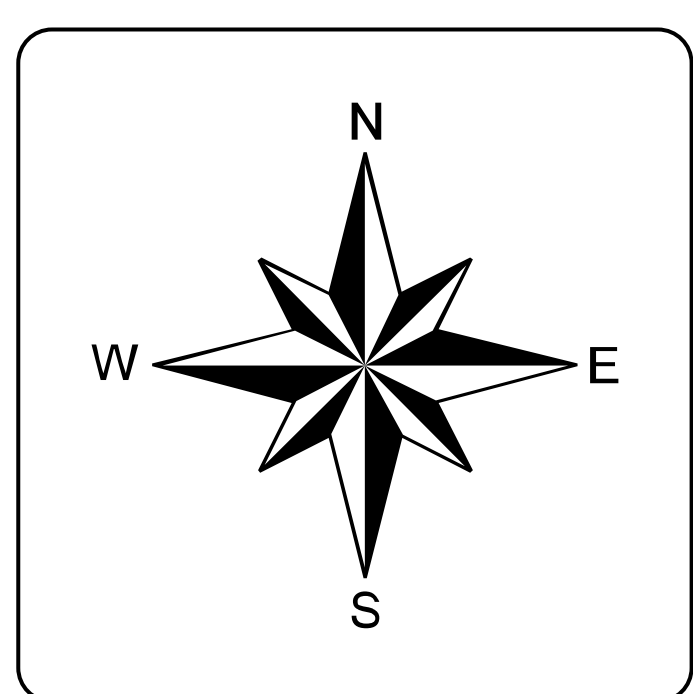
Region 3 - Trinity
Map 18
Extents of Identified
Potential FMSs



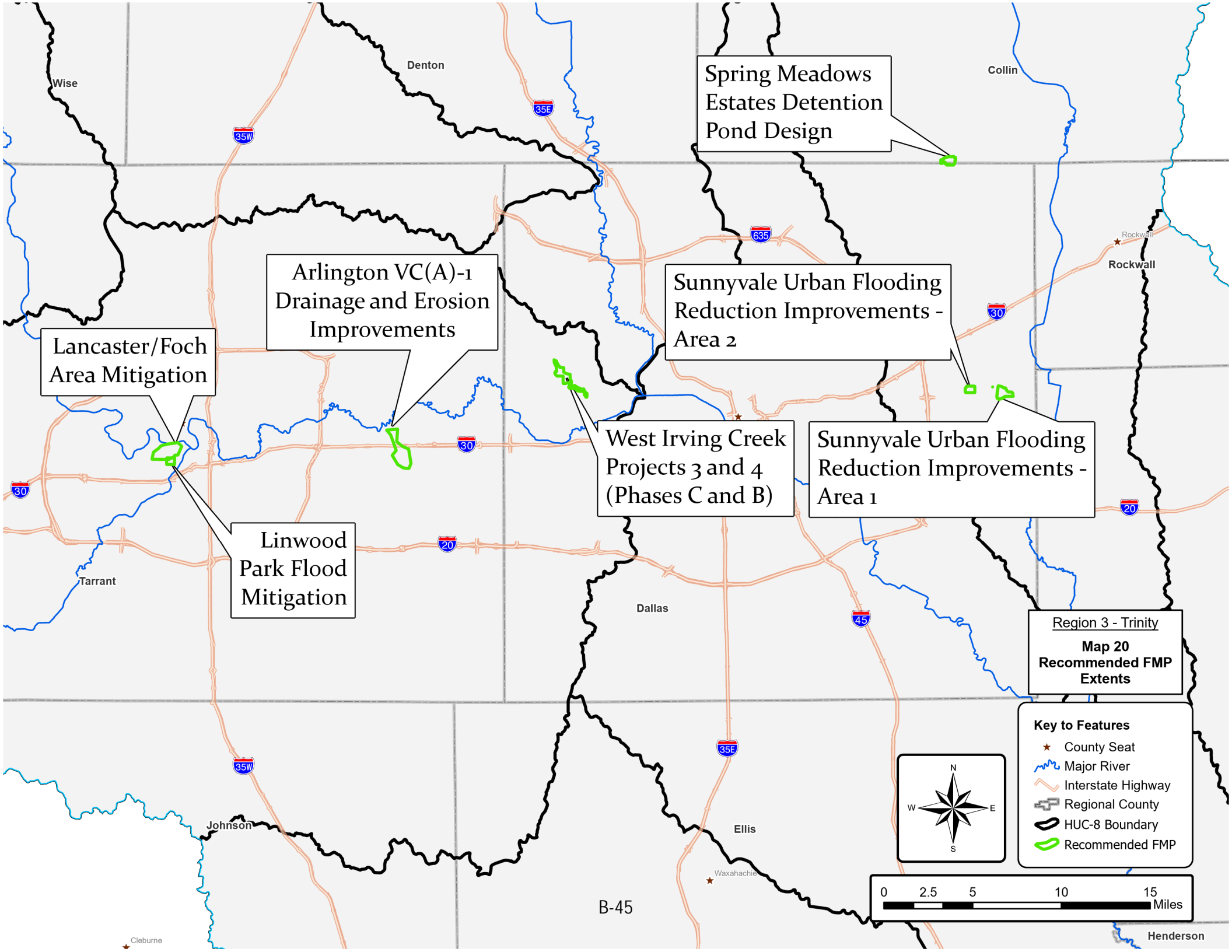
Key to Features

- ★ County Seat
- Major River
- Interstate Highway
- Trinity Regional Flood Planning Basin
- Major Reservoir
- HUC 12
- Regional County
- Category 1 FIF Project Areas
- Recommended FMEs*
- High
- Low

* Color symbology reflects the number of FMEs that overlap for the same area. The darker the color, the greater the number of FMEs.



Region 3 - Trinity
Map 19
Recommended FMEs
Impact Extents



Spring Meadows
Estates Detention
Pond Design

Arlington VC(A)-1
Drainage and Erosion
Improvements

Sunnyvale Urban Flooding
Reduction Improvements -
Area 2

Lancaster/Foch
Area Mitigation

West Irving Creek
Projects 3 and 4
(Phases C and B)

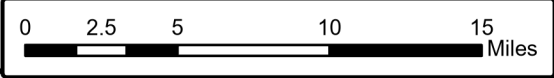
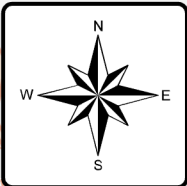
Sunnyvale Urban Flooding
Reduction Improvements -
Area 1

Linwood
Park Flood
Mitigation

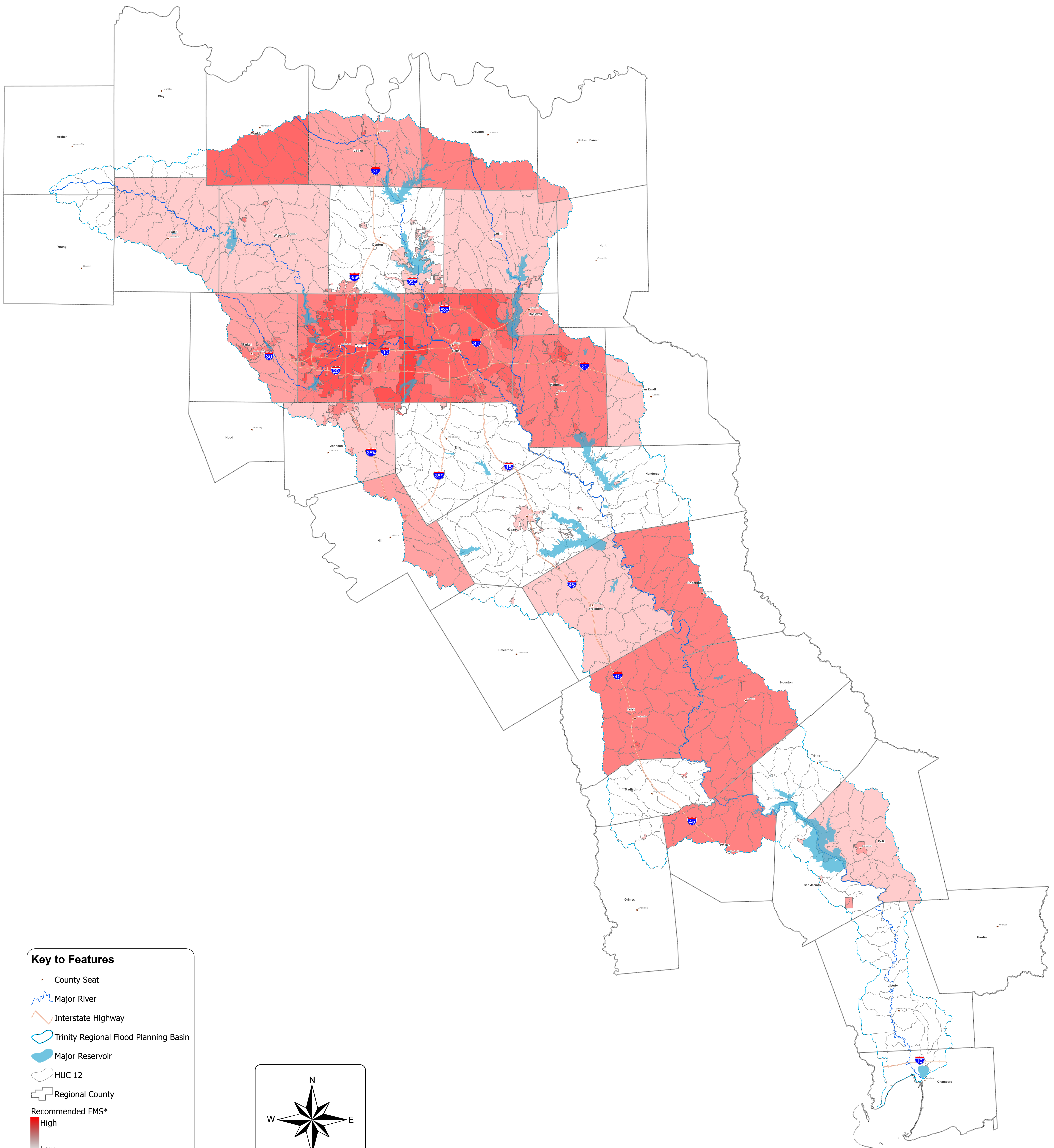
Region 3 - Trinity
Map 20
Recommended FMP
Extents

Key to Features

- ★ County Seat
- Major River
- Interstate Highway
- Regional County
- HUC-8 Boundary
- Recommended FMP



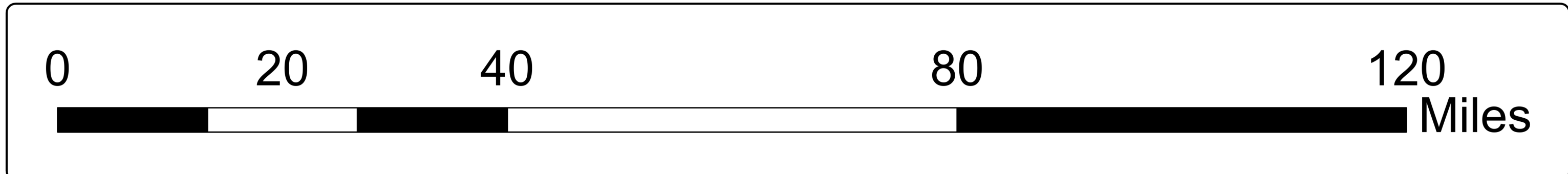
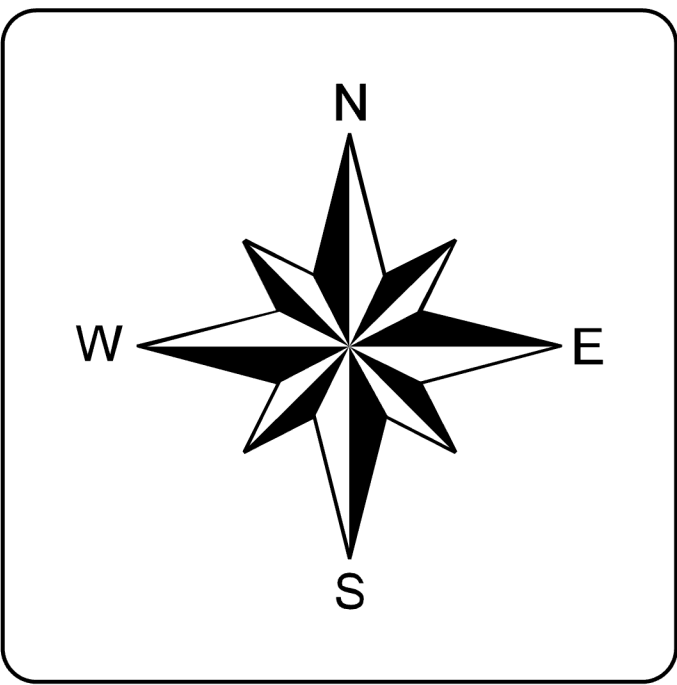
B-45



Key to Features

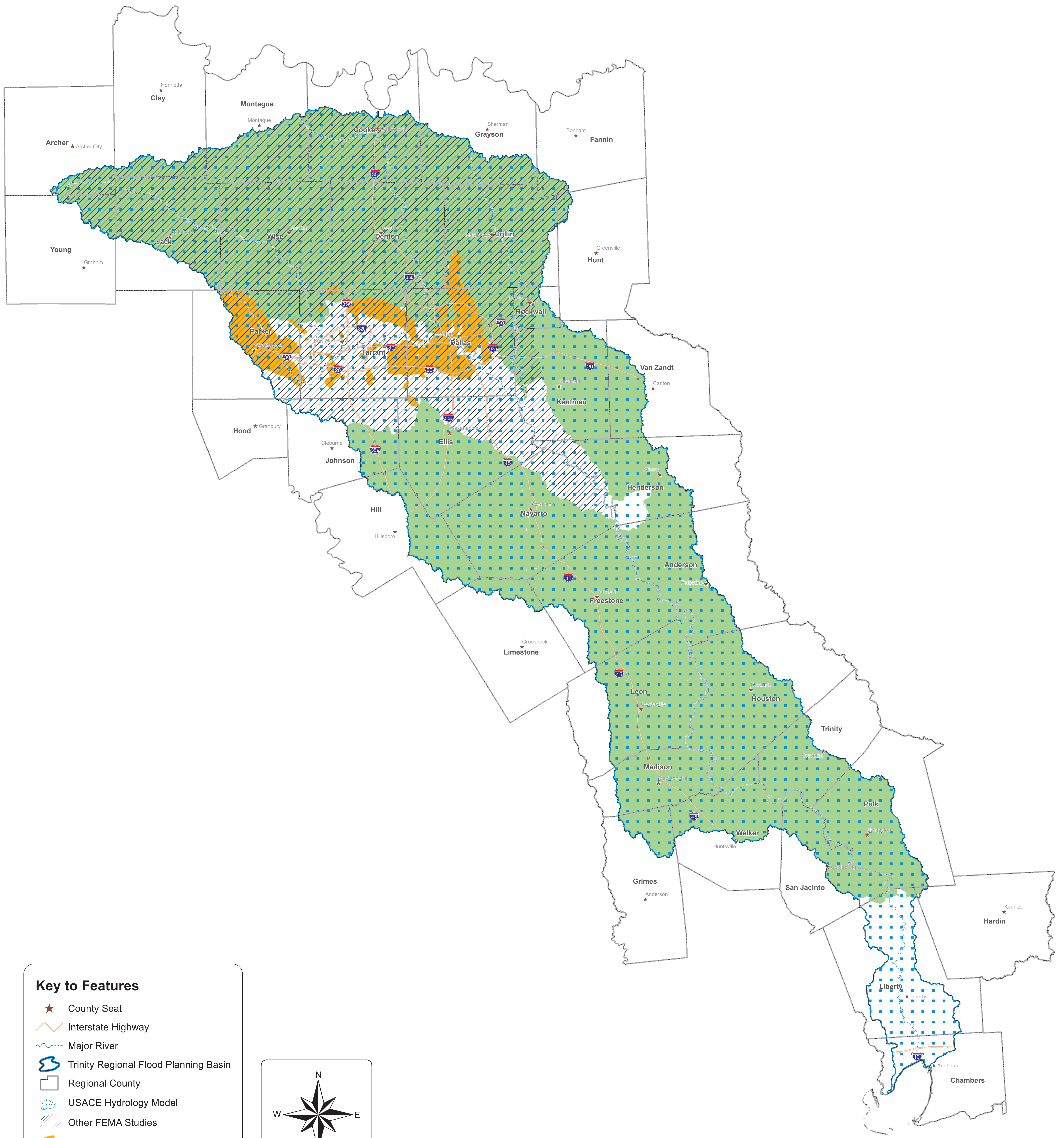
- County Seat
- Major River
- Interstate Highway
- Trinity Regional Flood Planning Basin
- Major Reservoir
- HUC 12
- Regional County
- Recommended FMS*
- High
- Low

* Color symbology reflects the number of FMSs that overlap for the same area. The darker the color, the greater the number of FMSs.



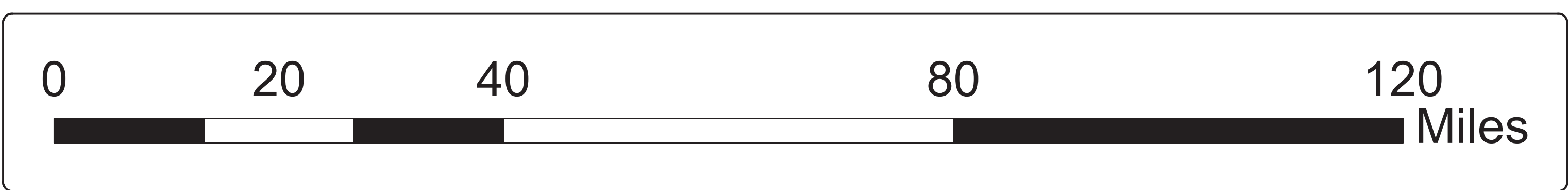
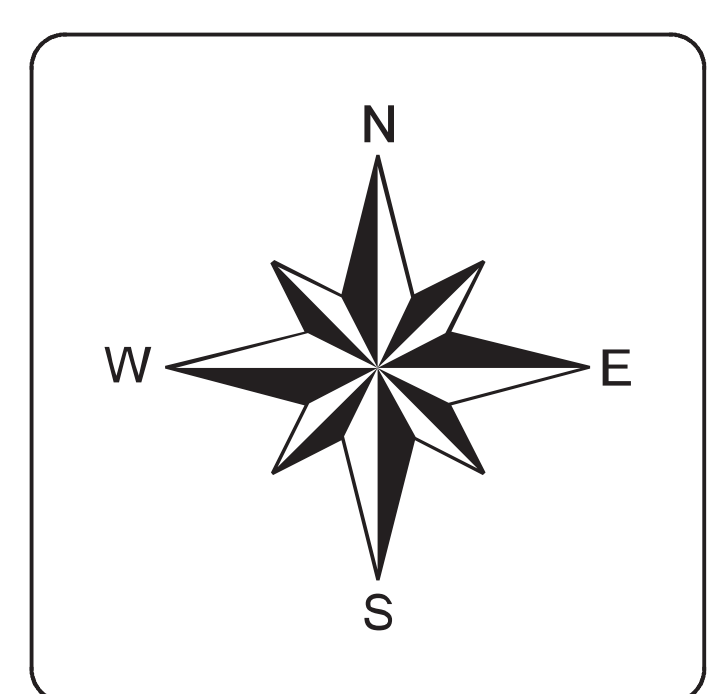
Region 3 - Trinity

**Map 21
Recommended FMSs
Impact Extents**



Key to Features

- ★ County Seat
- Interstate Highway
- Major River
- Trinity Regional Flood Planning Basin
- Regional County
- USACE Hydrology Model
- Other FEMA Studies
- FEMA CTP Studies
- BLE Studies



Region 3 - Trinity
Map 22
Model Coverage