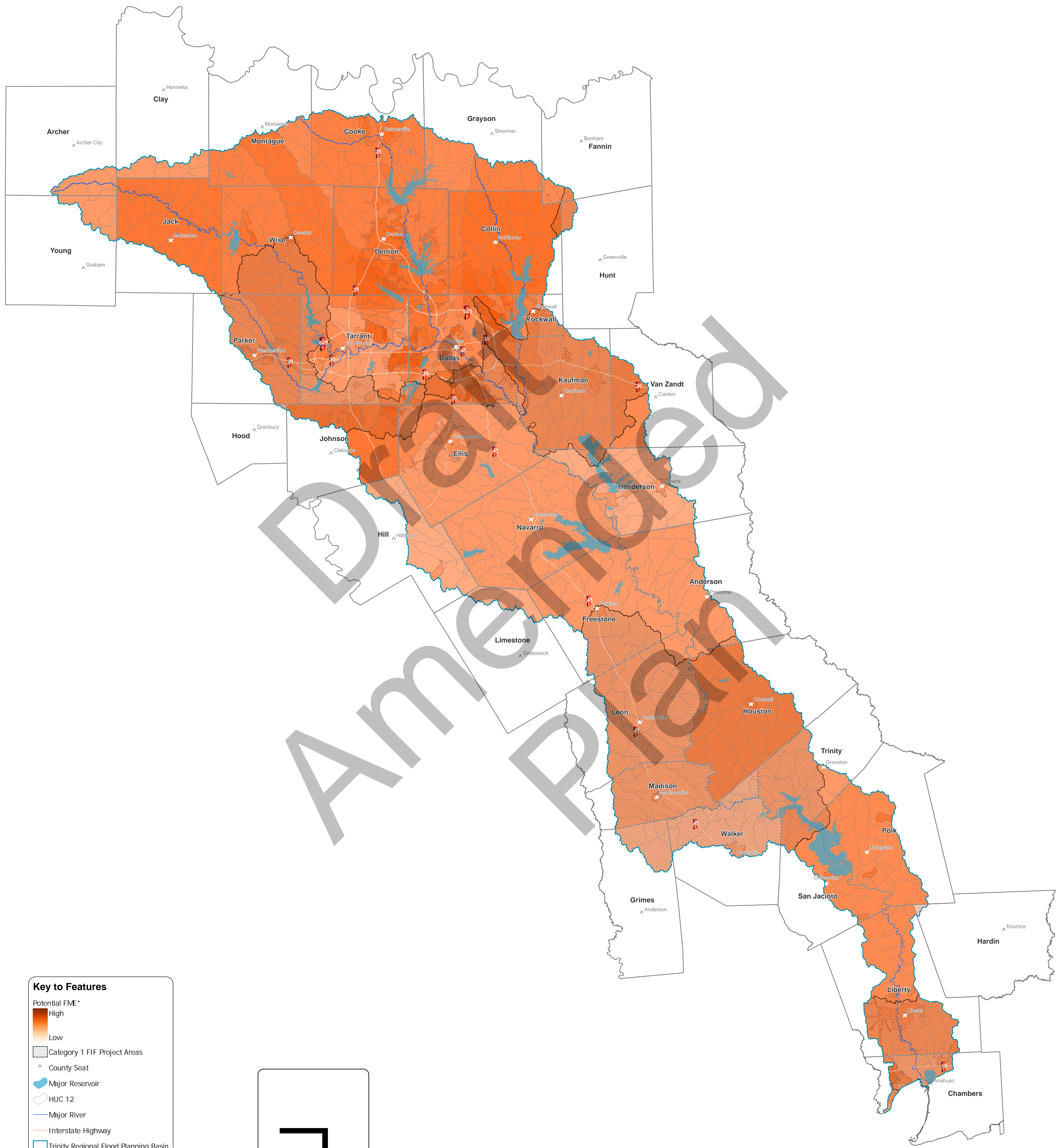


**APPENDIX B: Geodatabase and Map
Information (new FMEs, FMPs and FMSs only)**

Draft
Amended
Plan



Key to Features

Potential FME*

- High
- Low

Category 1 FIF Project Areas

County Seat

Major Reservoir

HUC 12

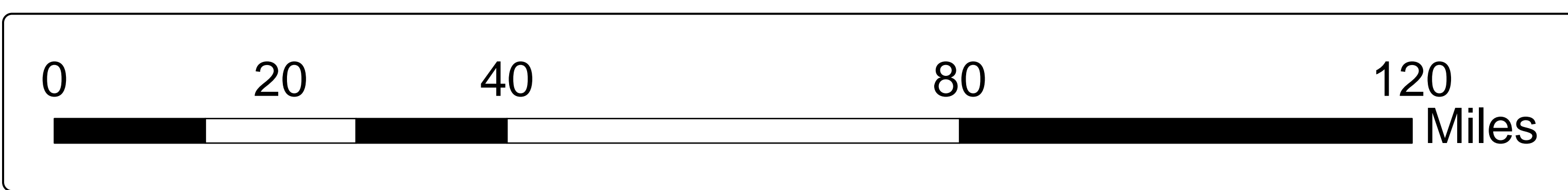
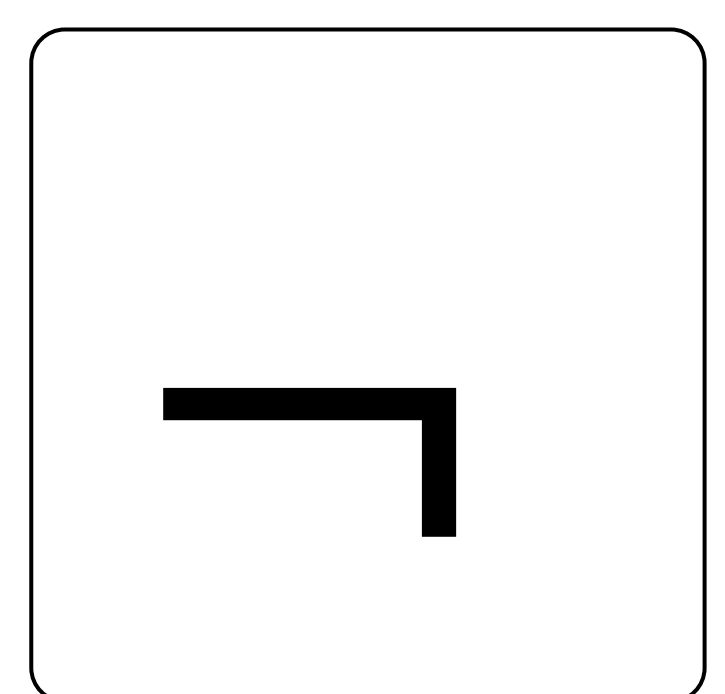
Major River

Interstate Highway

Trinity Regional Flood Planning Basin

Regional County

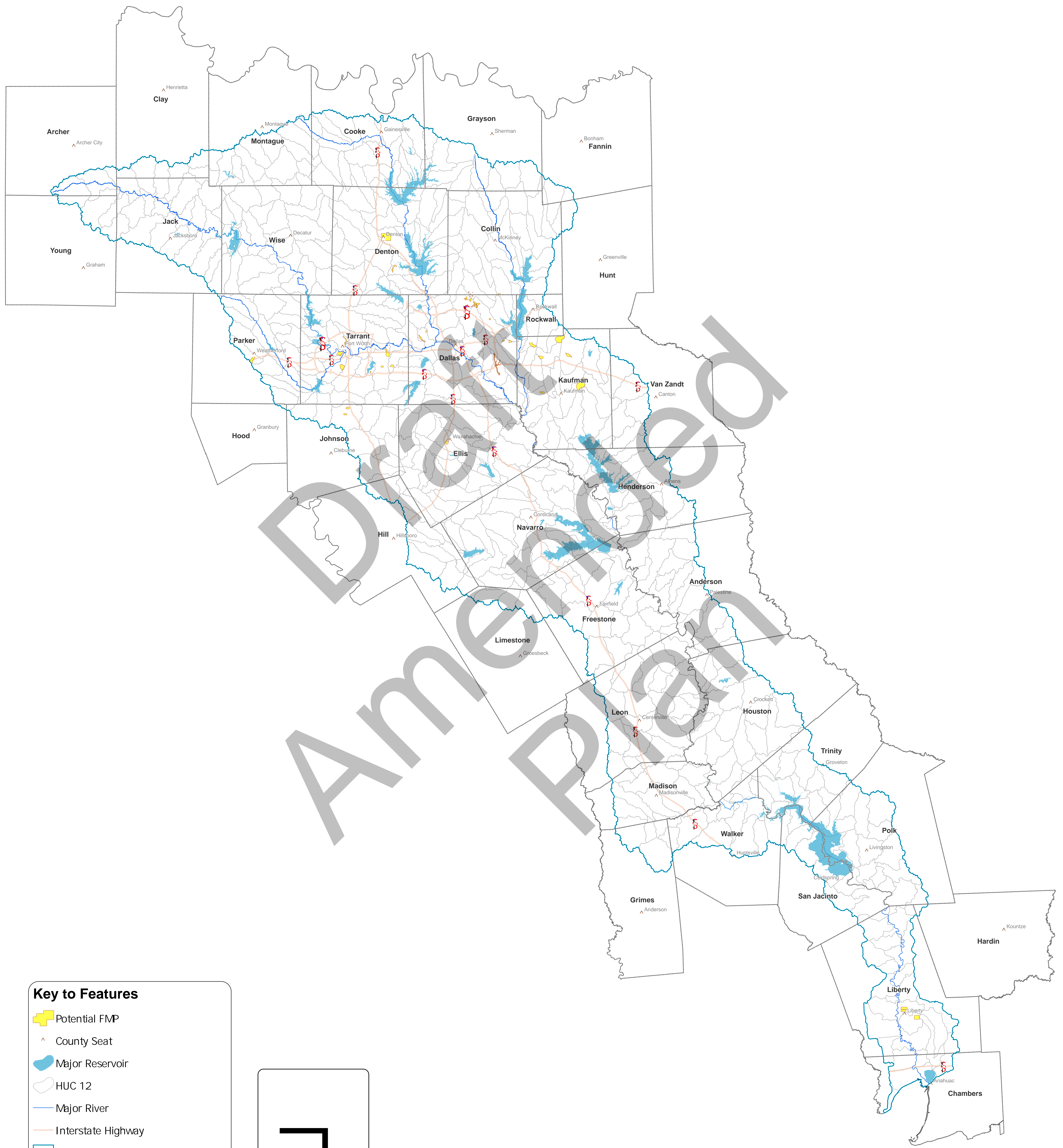
* Color symbology reflects the number of FMEs that overlap for the same area. The darker the color, the greater the number of FMEs.



Region 3 - Trinity

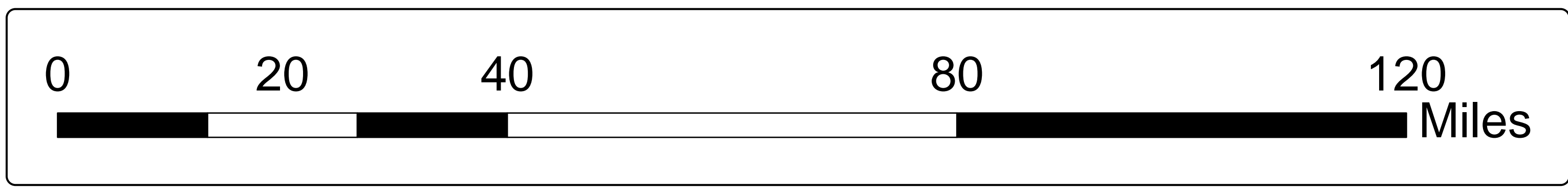
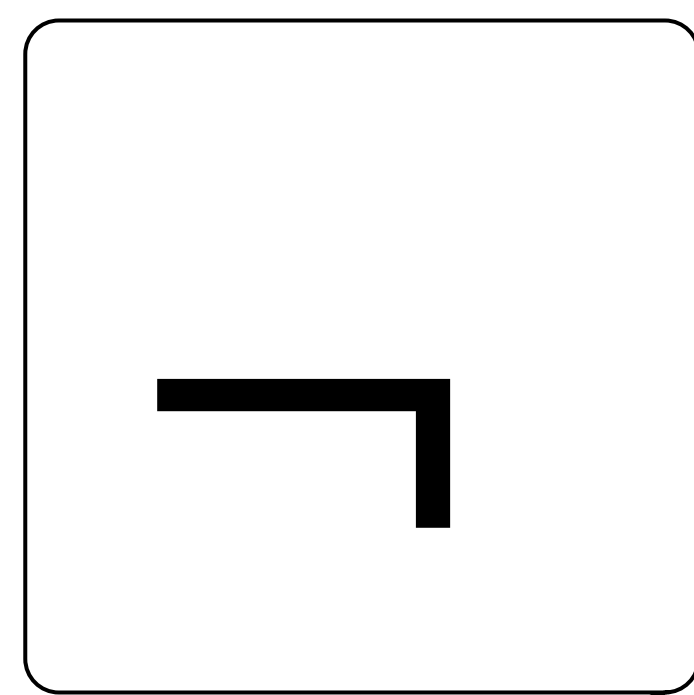
Map 16

Extents of Identified Potential FMEs

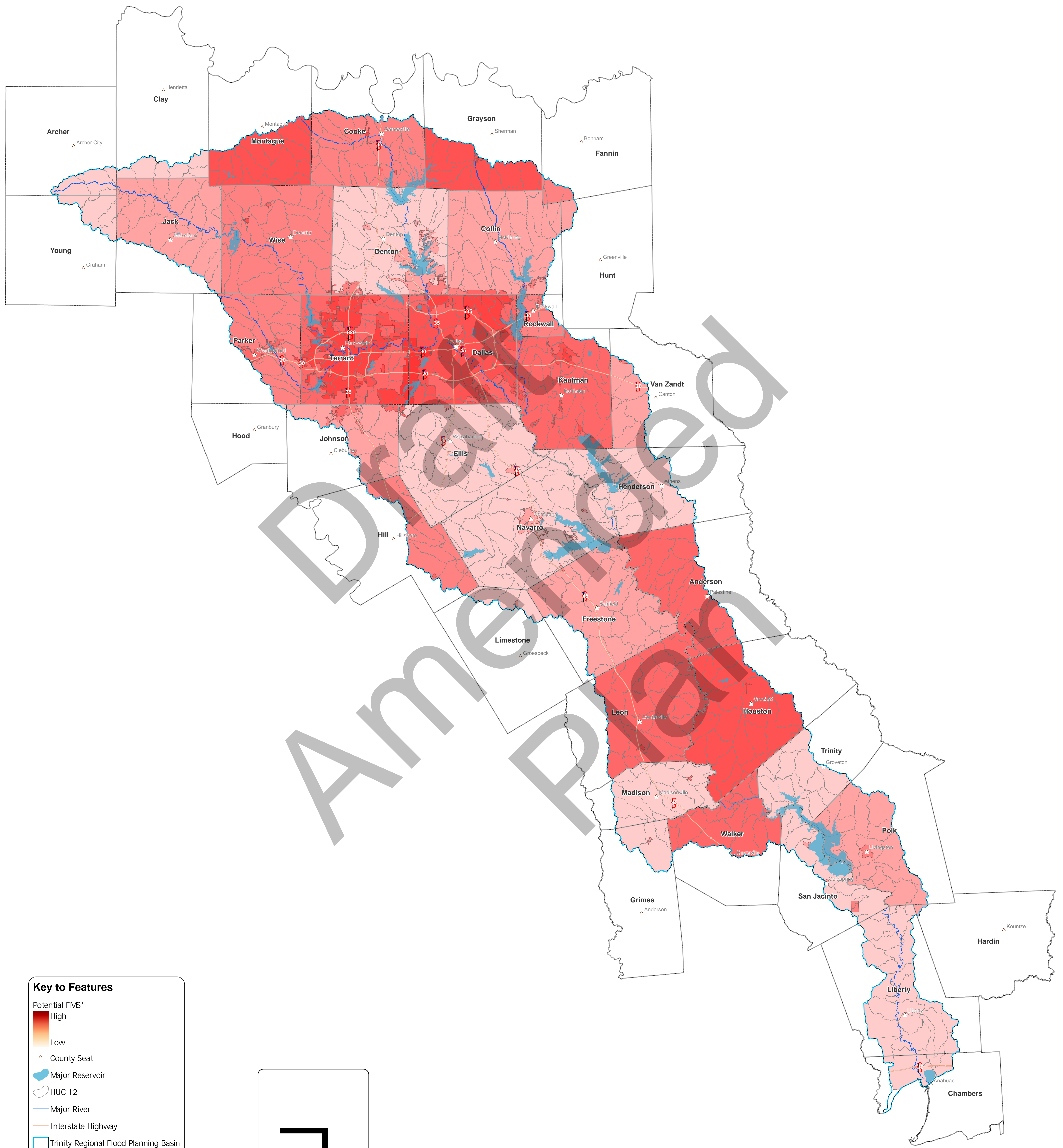


Key to Features

- Potential FMP
- County Seat
- Major Reservoir
- HUC 12
- Major River
- Interstate Highway
- Trinity Regional Flood Planning Basin
- Regional County



Region 3 - Trinity
Map 17
Extents of Identified
Potential FMPs



Key to Features

Potential FMS*

- High
- Low

County Seat

Major Reservoir

HUC 12

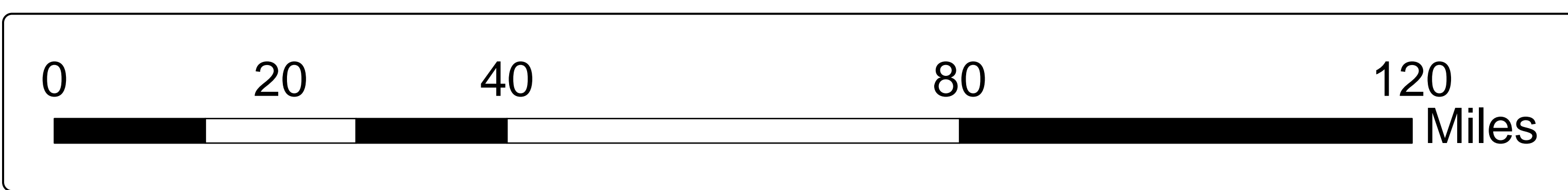
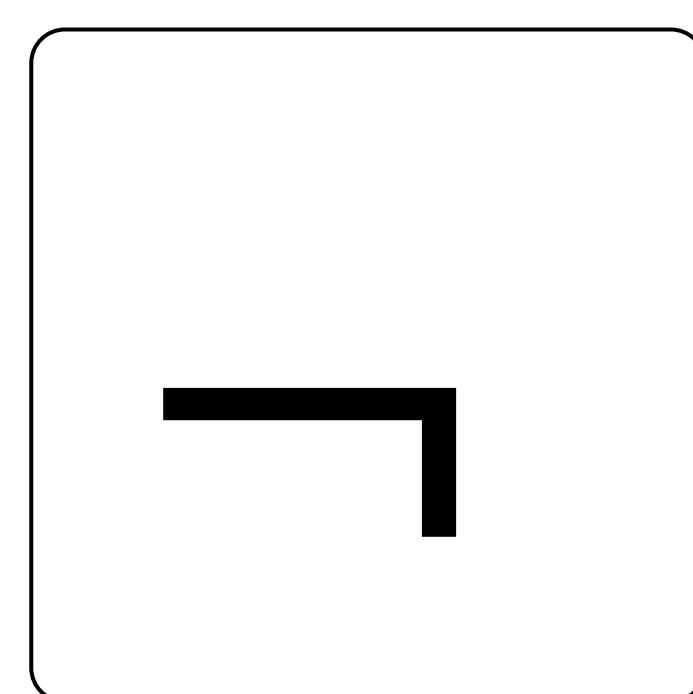
Major River

Interstate Highway

Trinity Regional Flood Planning Basin

Regional County

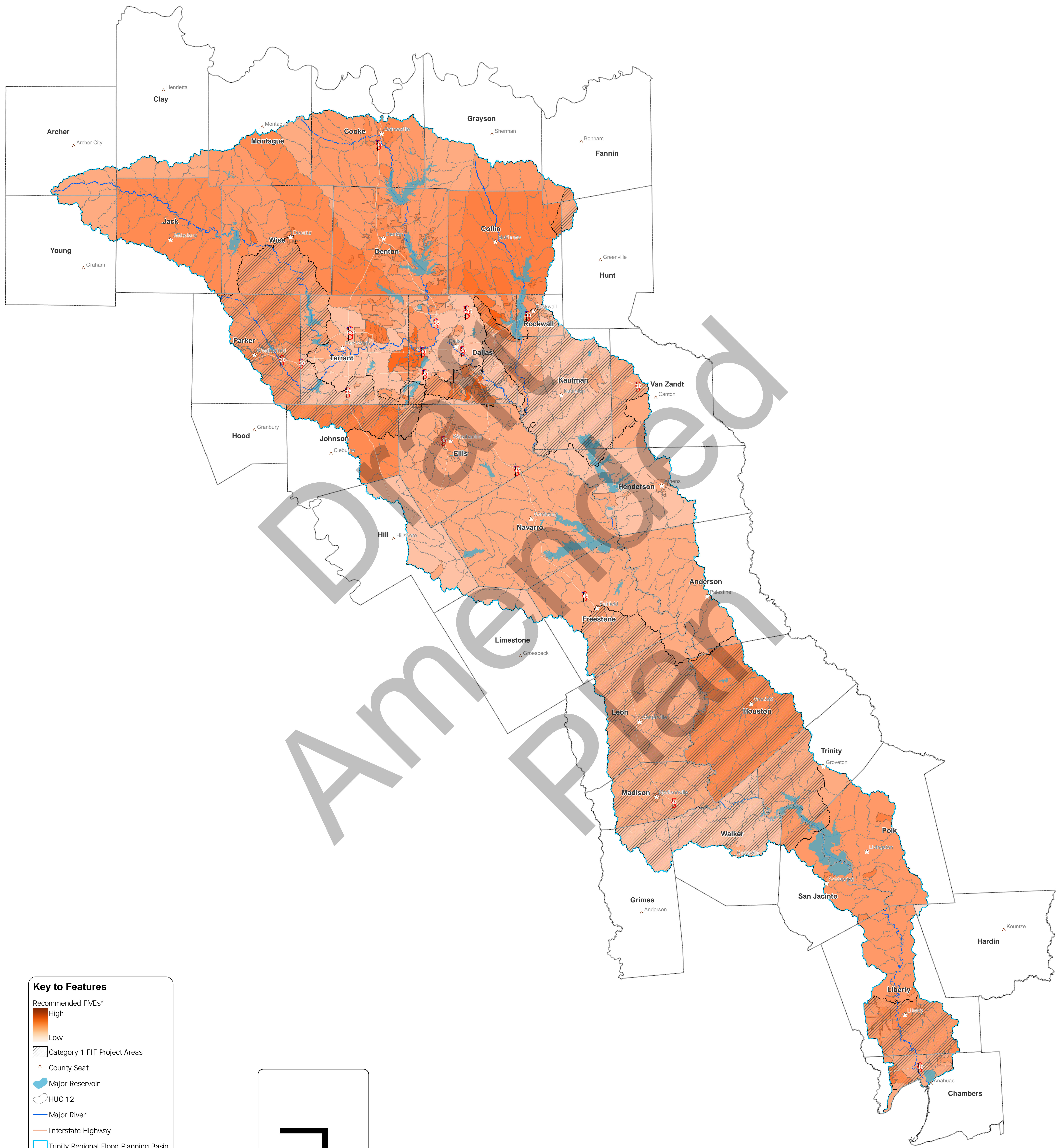
* Color symbology reflects the number of FMSs that overlap for the same area. The darker the color, the greater the number of FMSs.



Region 3 - Trinity

Map 18

Extents of Identified Potential FMSs



Key to Features

Recommended FMEs*

- High
- Low

Category 1 FIF Project Areas

County Seat

Major Reservoir

HUC 12

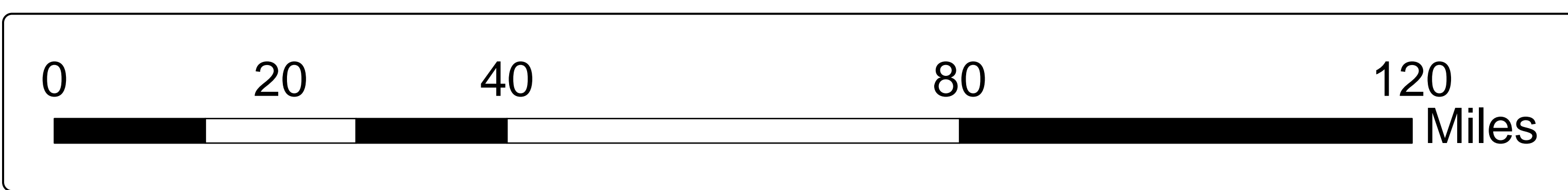
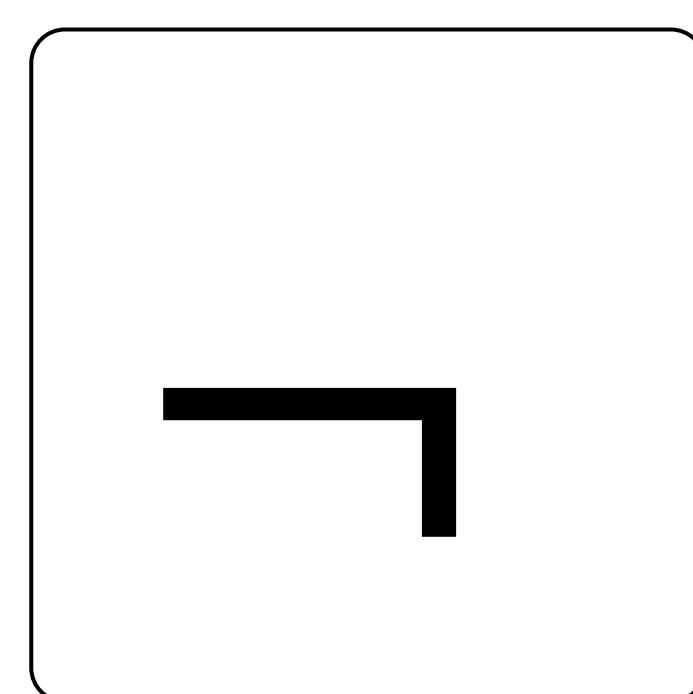
Major River

Interstate Highway

Trinity Regional Flood Planning Basin

Regional County

* Color symbology reflects the number of FMEs that overlap for the same area. The darker the color, the greater the number of FMEs.

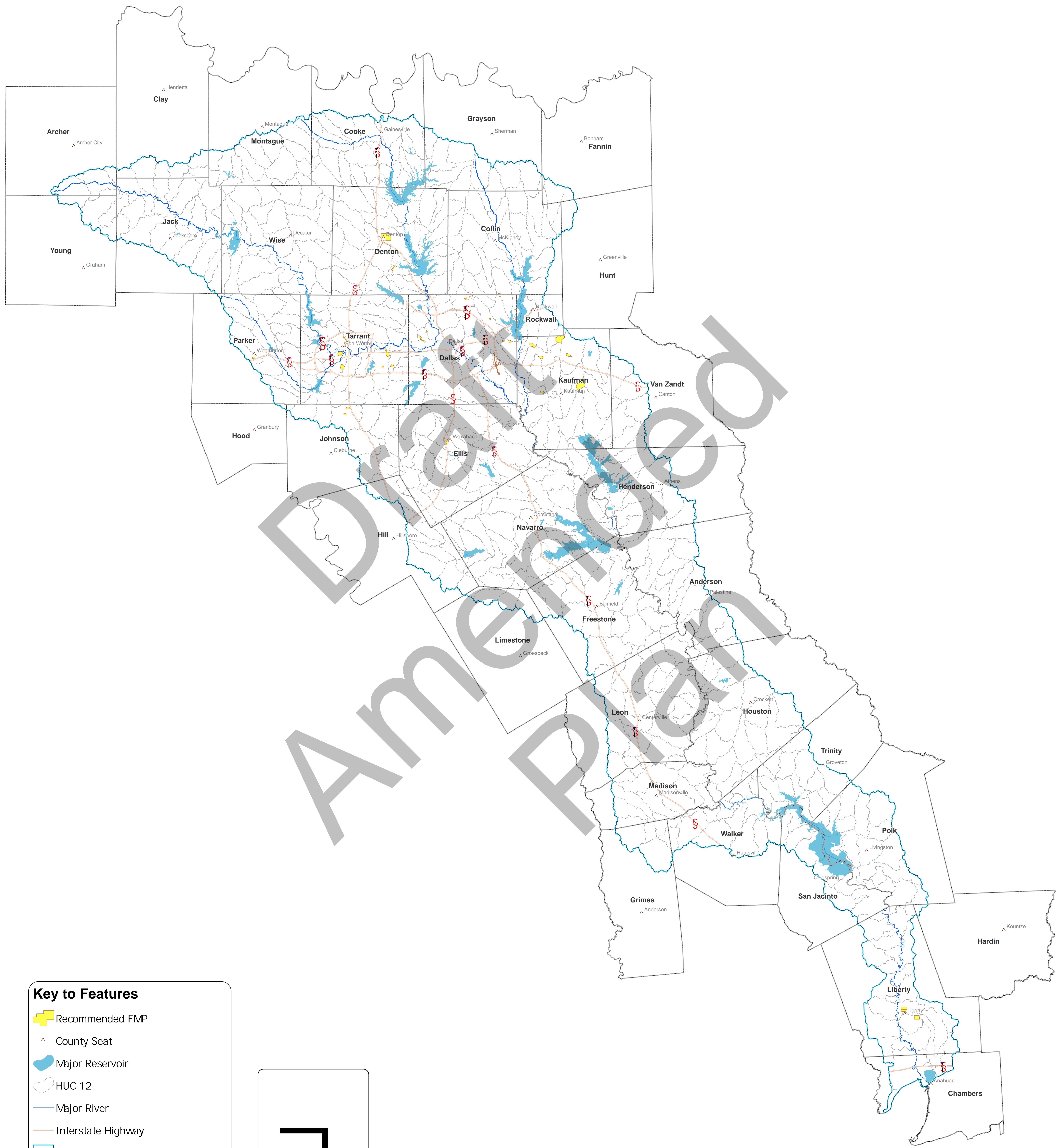


Region 3 - Trinity

Map 19

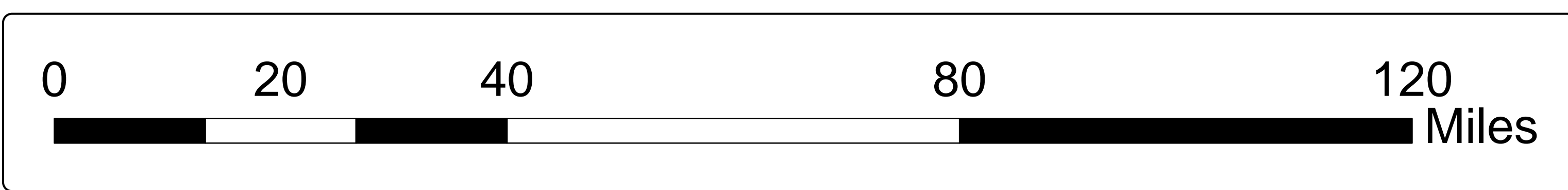
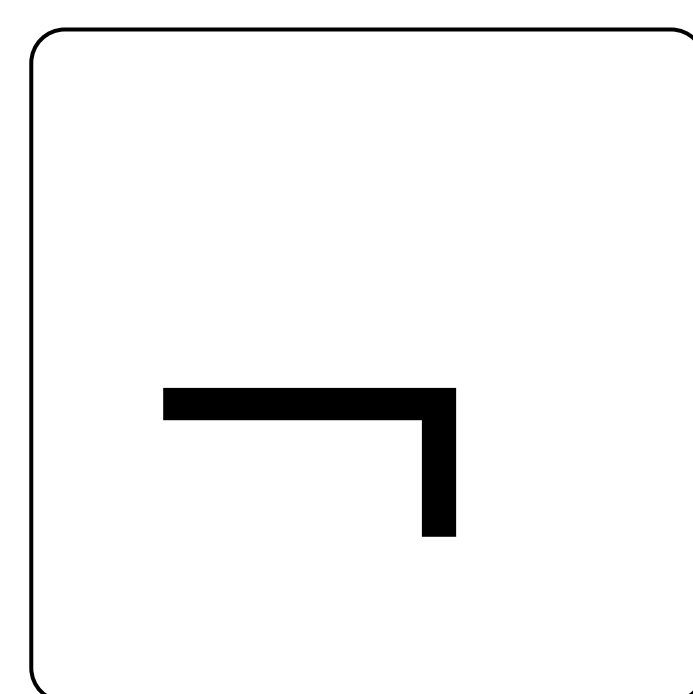
Recommended FMEs

Impact Extents

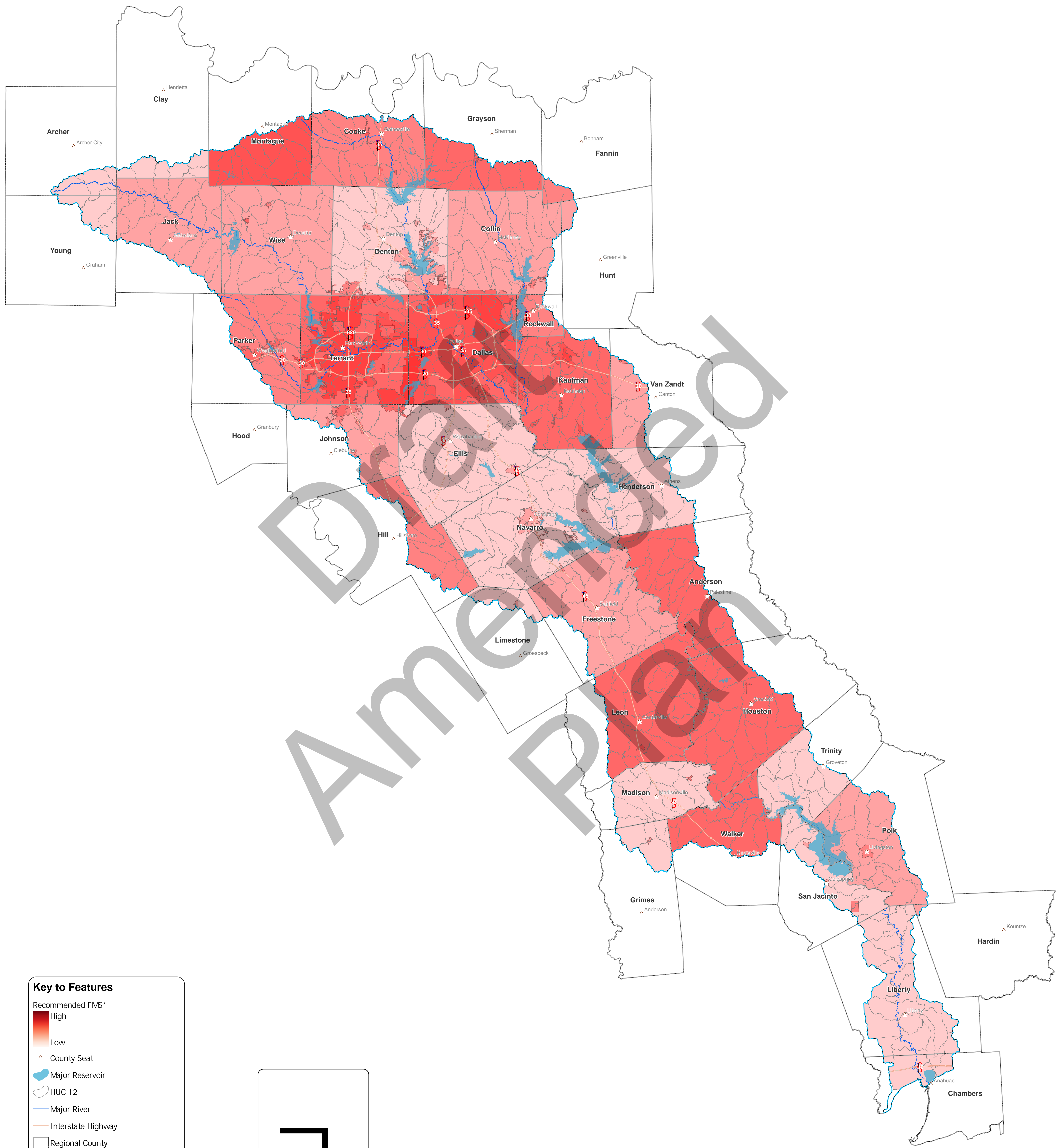


Key to Features

- Recommended FMP
- ▲ County Seat
- Major Reservoir
- HUC 12
- Major River
- Interstate Highway
- Trinity Regional Flood Planning Basin
- Regional County



Region 3 - Trinity
Map 20
Recommended FMP
Impact Extents



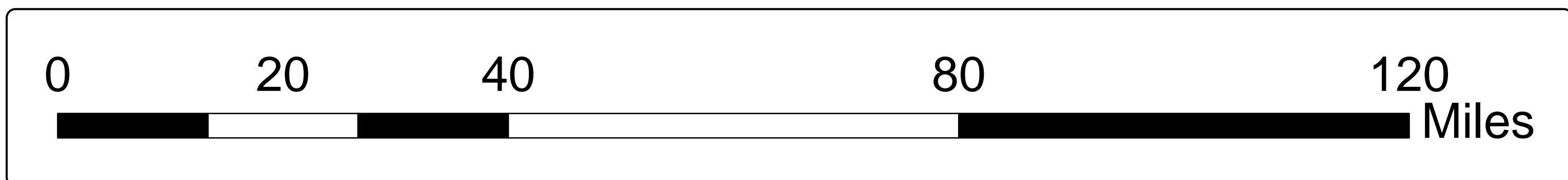
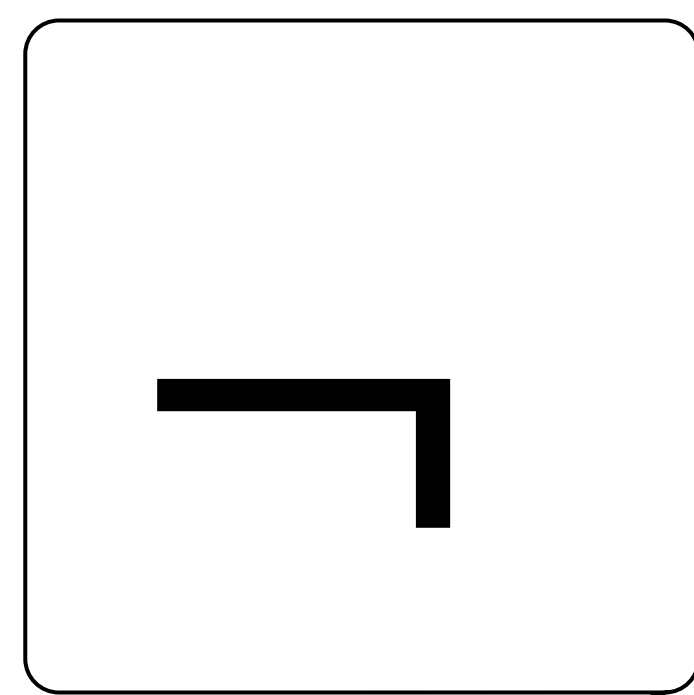
Key to Features

Recommended FMS*

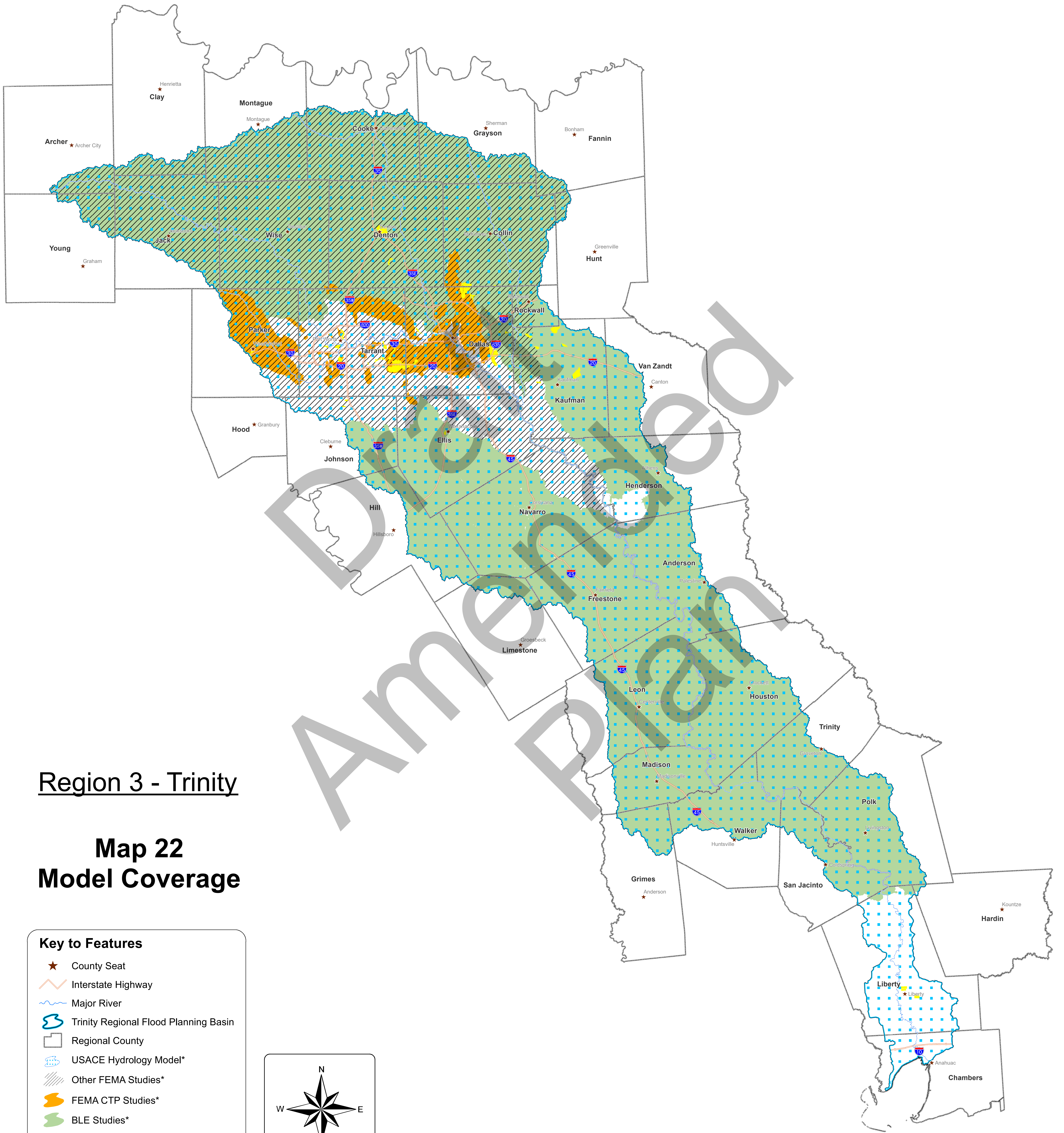
- High
- Low

- County Seat
- Major Reservoir
- HUC 12
- Major River
- Interstate Highway
- Regional County
- Trinity Regional Flood Planning Basin

* Color symbology reflects the number of FMSs that overlap for the same area. The darker the color, the greater the number of FMSs.



Region 3 - Trinity
Map 21
Recommended FMSs
Impact Extents



Region 3 - Trinity

Map 22 Model Coverage

Key to Features

- ★ County Seat
- Interstate Highway
- Major River
- Trinity Regional Flood Planning Basin
- Regional County
- USACE Hydrology Model*
- Other FEMA Studies*
- FEMA CTP Studies*
- BLE Studies*
- FMP Model Areas

*Model supporting FMEs, FMSs, and Floodplain Mapping.

